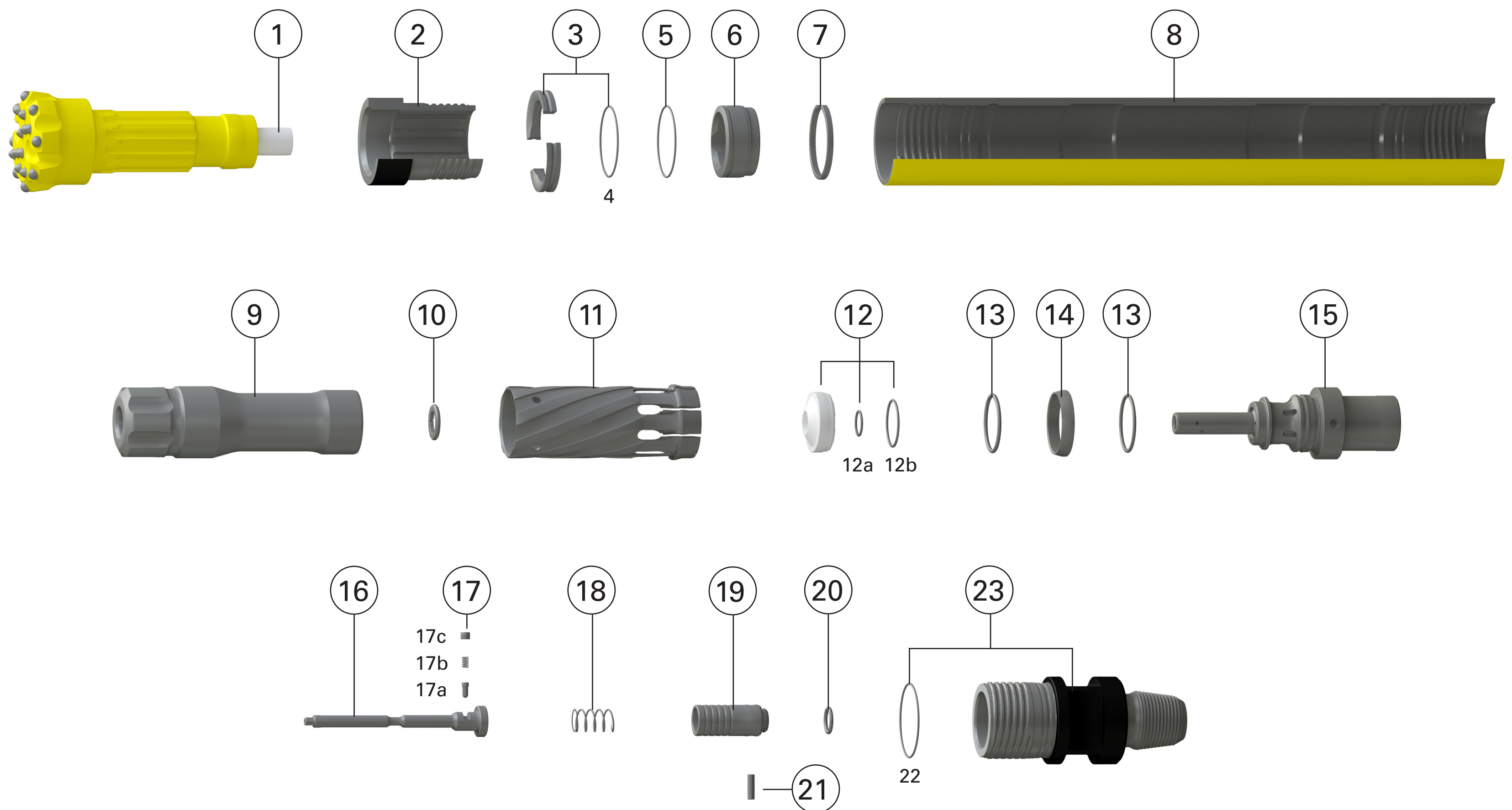


# Secoroc QLX 50/55

## Down-the-hole hammer



Ref.	Part	Prod. No.	Product code
1	Exhaust tube	90515427	9257
2	Chuck for QLX 50	52335312	9705-00-60-00-001
2	Chuck for QLX 55	52334927	9705-00-62-00-001
3	Bit retaining ring assembly	52335569	9705-00-60-00-002
4	O-ring* (bit retainer)		
5	O-ring* (bit bearing)		
6	Bit bearing	89010090	9705-00-68-00-022
7	Lock ring	52335577	9705-00-60-00-058
8	Casing for QLX 50	89010067	9705-00-68-00-004
8	Casing for QLX 55	89010084	9705-00-68-14-004
9	Piston	52335353	9705-00-60-00-005
10	Seal - piston tail bore	52335486	9705-00-60-00-054
11	Inner cylinder	52335361	9705-00-60-00-048
12	Valve assembly	52335379	9705-00-60-00-044
12a	O-ring*		
12b	O-ring*		
13	O-ring*		
14	Compression cone	52335502	9705-00-60-00-014
15	Air distributor	89010063	9705-00-68-00-042
16	Plug, guide flow select	89010064	9705-00-68-00-052
17	Detent assembly	89010126	9705-00-68-00-089
17a	Plunger*		
17b	Plunger spring*		
17c	Plunger retainer plug*		
18	Check valve spring	89010065	9705-00-68-00-016
19	Check valve	89010066	9705-00-68-00-015
20	O-ring* (check valve)		
21	Choke plug solid	50899137	9706-00-40-00-008
22	O-ring*		
23	Backhead assy. for QLX 50	89010121	9705-05-68-00-020
23	Backhead assy. for QLX 55	89010122	9705-05-68-14-020

\*Not supplied separately

Hammers and kits	Prod. No.	Product code
QLX 50 Complete, API 3 1/2" Reg Pin	89010092	9705-05-68-00
QLX 55 Complete, API 3 1/2" Reg Pin	89010093	9705-05-68-14
E-kit QLX 50, API 3 1/2" Reg Pin	89010124	9705-05-68-00-040
E-kit QLX 55, API 3 1/2" Reg Pin	89010125	9705-05-68-14-040
O-ring kit incl. items 2x4, 1x5, 1x22	89010176	9705-00-68-00-047
Sustainability kit incl. O-ring kit + items 10,12,2x13,20	89010123	9705-00-68-00-070

Wear limits		
Chuck	Min. length	1,85" / 47,0mm
Casing reverse diam. QLX 50	Min. OD	4,65" / 118,1mm
Casing reverse diam. QLX 55	Min. OD	4,84" / 122,9mm
Casing discard diam. QLX 50/55	Min. OD	4,38" / 111,3mm
Bit bearing	Max I.D	3,019" / 76,68mm
Piston / casing clearance	Max.	0,01" / 0,25mm
Piston / inner Cylinder clearance	Max.	0,009" / 0,23mm
Exhaust tube protrusion	Max.	2,07" / 52,58mm