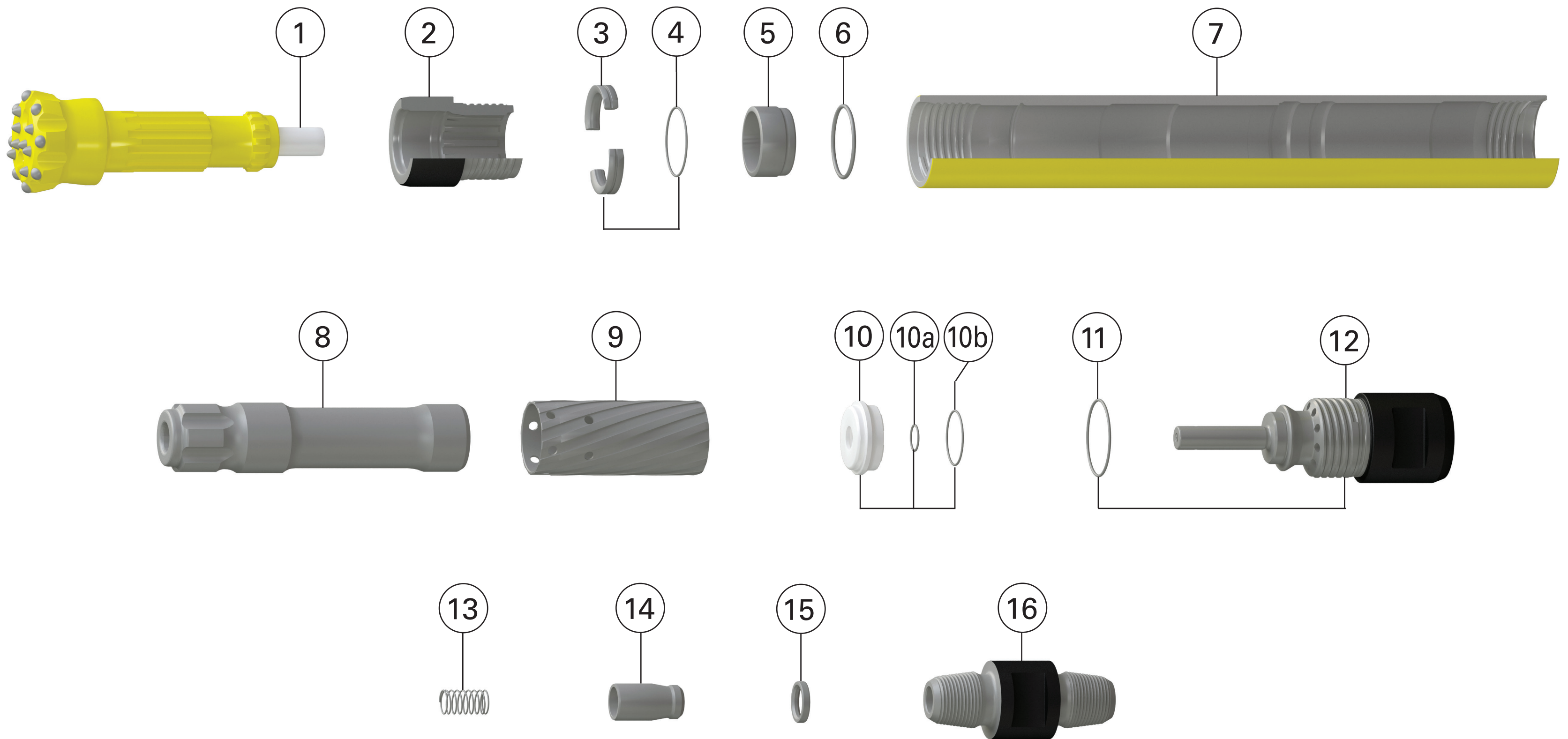


Secoroc QLX 40

Down-the-hole hammer

RDS

ROCK DRILL SALES



Ref.	Part	Prod. No.	Product code
1	Exhaust tube	90516004	9115
2	Chuck	52339686	9704-QX-00-000-64-000-001
3	Bit retaining ring assembly incl. O-ring	52339694	9704-QX-00-000-64-000-A02
4	O-ring* (bit retaining ring)	-	
5	Bit bearing	52339702	9704-QX-00-000-64-000-A22
6	O-ring* (bit bearing)	-	
7	Casing assembly incl. inner cylinder	52341112	9704-QX-00-000-00-000-004
8	Piston	52341120	9704-QX-00-000-64-000-005
9	Inner cylinder*	-	
10	Valve assembly incl. O-rings	52345402	9704-QX-00-000-00-000-A45
10a	O-ring* (valve)	-	
10b	O-ring* (valve)	-	
11	O-ring*(backhead)	-	
12	Backhead assembly incl. O-ring	89010127	9704-QX-00-000-00-000-A20
13	Check valve spring	89010119	9704-QX-00-000-00-000-016
14	Check valve	89010118	9704-QX-00-000-00-000-017
15	Check valve seal	52344744	9704-QX-00-000-00-000-018
16	Adapter 2 3/8" API Reg pin-pin	89009498	310-3089-10-007-01-D00,41

*O-rings not sold separately. Included in different kits, see table.

Hammers and kits	Prod. No.	Product code
QLX 40 complete, 2 3/8" API Reg. Box incl. pin-pin adapter	89010117	9704-QX-00-10P-64-000
Economy kit	N/A	N/A
O-ring kit incl. 3x4, 6, 10a, 10b, 11, 15	89010164	9704-QX-00-000-00-000-K47

Accessories	Prod. No.	Product code
Break out washer	89010017	9704-00-60-00-053

Wear limits		
Chuck	Min. length	1.85" / 47 mm
Casing, backhead end	Min. OD	3.66" / 93,0 mm
Casing, chuck end	Min. OD	3.58" / 91,0 mm
Bit bearing	Max. ID	2.068" / 52,53 mm
Piston / casing clearance	Max.	0.011" / 0,27 mm
Piston / inner cylinder clearance	Max.	0.011" / 0,27 mm
Exhaust tube protrusion		2.32" / 58,93 mm

RDS

ROCK DRILL SALES

1705 Old Covington RD NE
Conyers GA 30013
770-483-0788
www.rockdrillsales.com

Atlas Copco