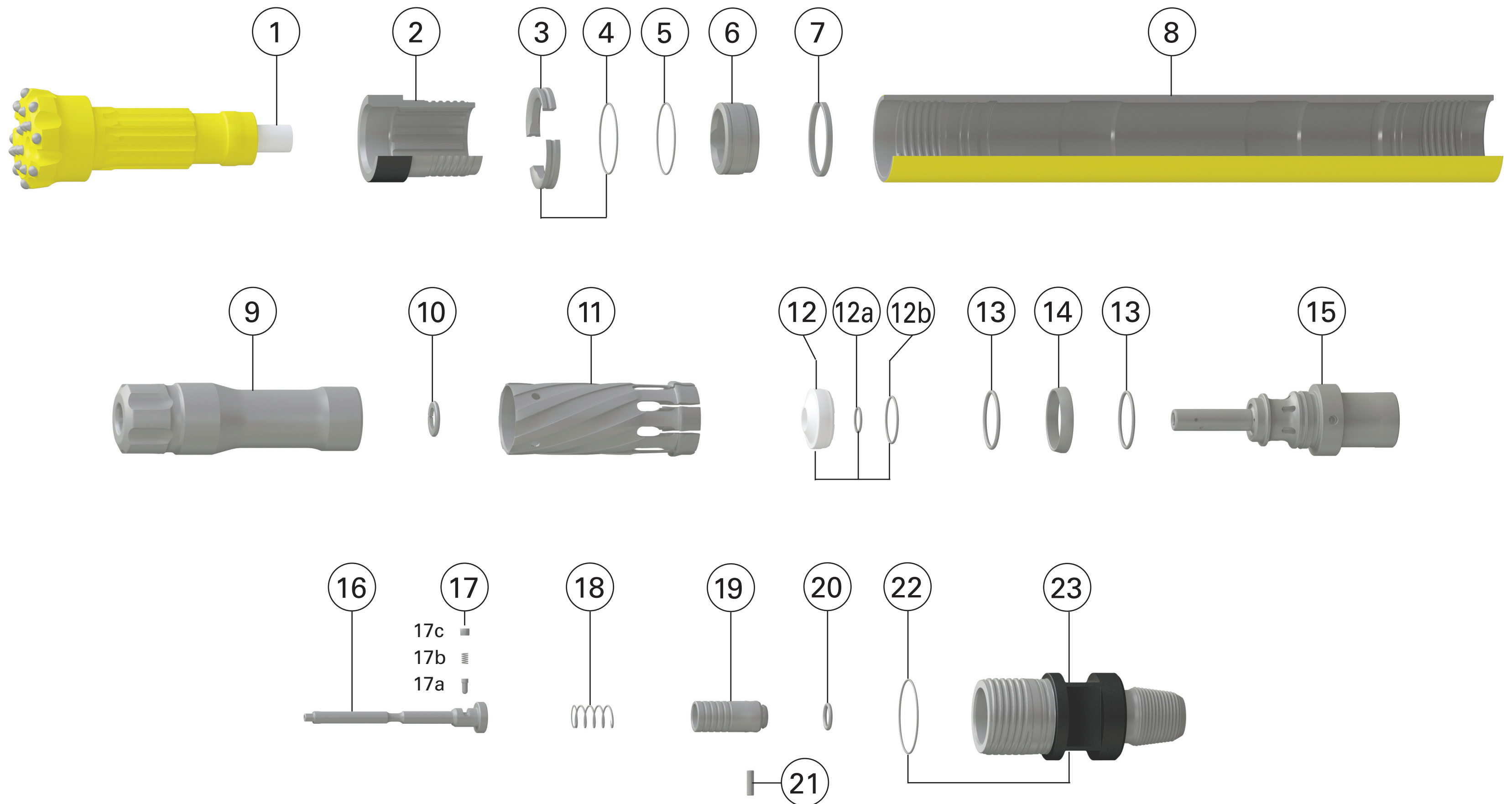


# Secoroc QLX 50/55

# RDS

ROCK DRILL SALES

## Down-the-hole hammer



Ref.	Part	Prod. No.	Product code
1	Exhaust tube	90515427	9257
2	Chuck for QLX 50	52335312	9705-QX-00-000-25-000-001
2	Chuck for QLX 55	52334927	9705-QX-00-000-25-H00-001
3	Bit retaining ring assembly	52335569	9705-QX-00-000-25-000-A02
4	O-ring* (bit retainer)	-	-
5	O-ring* (bit bearing)	-	-
6	Bit bearing	89010090	9705-QX-00-000-00-000-A22
7	Lock ring	52335577	9705-QX-00-000-00-000-058
8	Casing for QLX 50	89010067	9705-QX-00-000-00-000-004
8	Casing for QLX 55	89010084	9705-QX-00-000-00-H00-004
9	Piston	52335353	9705-QX-00-000-25-000-005
10	Seal - piston tail bore	52335486	9705-QX-00-000-00-000-054
11	Inner cylinder	52335361	9705-QX-00-000-00-000-048
12	Valve assembly	52338514	9705-QX-00-000-00-000-A45
12a	O-ring* (valve)	-	-
12b	O-ring* (valve)	-	-
13	O-ring* (compression cone)	-	-
14	Compression cone	52335502	9705-QL-00-000-00-000-014
15	Air distributor	89010063	9705-QX-00-000-00-000-042
16	Plug, guide flow select	89010064	9705-QX-00-000-00-000-052
17	Detent assembly	89010126	9705-QX-00-000-00-000-089
17a	Plunger* (detent)	-	-
17b	Plunger spring* (detent)	-	-
17c	Plunger retainer plug* (detent)	-	-
18	Check valve spring	89010065	9705-QX-00-000-00-000-016
19	Check valve	89010066	9705-QX-00-000-00-000-017
20	O-ring* (check valve)	-	-

Ref.	Part	Prod. No.	Product code
21	Choke plug solid**	50899137	9706-QL-00-000-00-000-180
21	Choke plug 1/8" **	50899129	9706-QL-00-000-00-000-181
21	Choke plug 1/4" **	50899111	9706-QL-00-000-00-000-182
22	O-ring* (backhead)	-	-
23	Backhead assembly for QLX 50	89010121	9705-QX-00-14P-00-000-A20
23	Backhead assembly for QLX 55	89010122	9705-QX-00-14P-00-HB0-A20

\*O-rings not sold separately. Included in different kits, see table.

\*\*Item 21 - Choke plug 1/4" and choke plug 1/8" may be used to bypass more air to reduce pressure and/or increase bailing velocity.

Hammers and kits	Prod. No.	Product code
QLX 50 Complete, API 3 1/2" Reg. Pin	89010092	9705-QX-00-14P-64-000
QLX 55 Complete, API 3 1/2" Reg. Pin	89010093	9705-QX-00-14P-64-HB0
E-kit QLX50, API 3 1/2" Reg Pin incl. item 2, 4, 5, 8, 10, 12, 2x13, 20, 22, 23	89010124	9705-QX-00-14P-64-000-K40
E-kit QLX55, API 3 1/2" Reg Pin incl. item 2, 4, 5, 8, 10, 12, 2x13, 20, 22, 23	89010125	9705-QX-00-14P-64-HB0-K40
O-ring kit incl. items 2x4, 5, 22	89010176	9705-QX-00-000-00-000-K47
Sustainability kit incl. O-ring kit + items 10, 12, 2x13, 20	89010123	9705-QX-00-000-00-000-K70

Wear limits		
Chuck	Min. length	1,85" / 47,0 mm
Casing reverse diam. QLX 50	Min. OD	4,65" / 118,1 mm
Casing reverse diam. QLX 55	Min. OD	4,84" / 122,9 mm
Casing discard diam. QLX 50/55	Min. OD	4,38" / 111,3 mm
Bit bearing	Max I.D	3,019" / 76,68 mm
Piston / casing clearance	Max.	0,01" / 0,25 mm
Piston / inner cylinder clearance	Max.	0,009" / 0,23 mm
Exhaust tube protrusion		2,07" / 52,58 mm

# RDS

ROCK DRILL SALES

1705 Old Covington Rd NE  
Conyers GA 30013  
770-483-0788  
www.rockdrillsales.com

# Atlas Copco