

Atlas Copco Rock Drilling Tools

SECOROC Drill Pipe

Product Catalogue

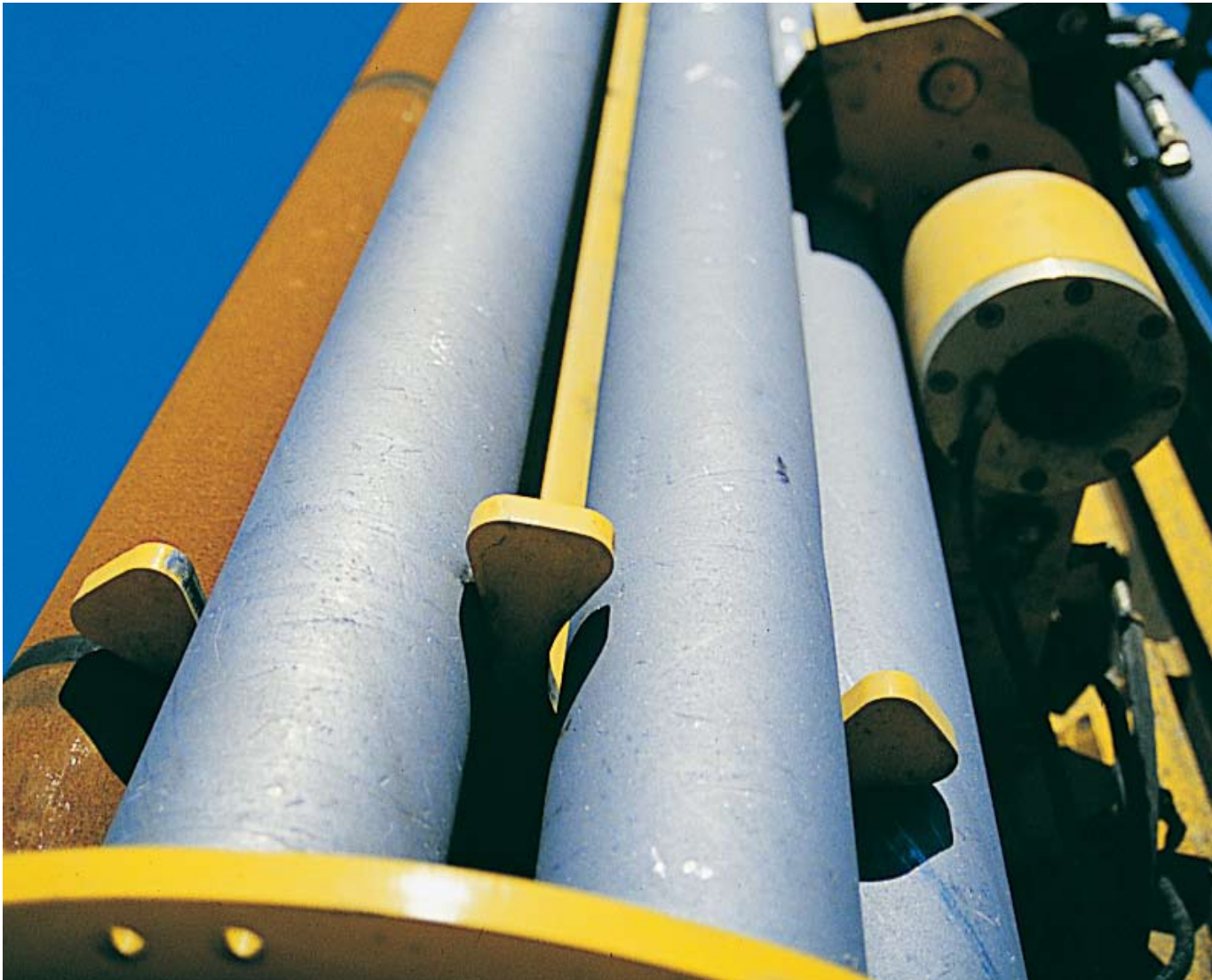


Table of Contents

Introduction	3
Technical Information	4
Drill Pipes	5-9
DM30/45/50/L, T4W, T4BH, RD20.....	5-6
DM-H, DMM-2	7
DMM-3	7
ECM695/760/780	7
PV-271	8
PV-351	8
T2, T3, TH60/75E/100A.....	8
Atlas Copco Simba Rig	8
ROC F6/L6/L8.....	8-9
Various Rig Applications	9
Subs	10-13
Box to Box.....	10
Box to Pin	10-12
Pin to Pin.....	13
Index	14-15
Index sorted by Product Number.....	14
Index sorted by Catalog Number	15

Attention Drill Pipe Catalogue Users

The drill pipes and starter pipes included in this catalogue are considered to be standard items within the Atlas Copco product offering. Additional sizes and configurations may be available on a special request basis. Contact your local Atlas Copco office should you require a product not contained in this catalogue.

For cataloguing purposes, each drill pipe has been linked to its most traditional drill rig application. Some items may be used on more than one model of drill rig, but are not listed as such in this catalogue.



Secoroc tubes — part of a productive package

Though their importance is often underestimated, tubes play an important role in DTH drilling – regardless of application, rock type, hole depth or drill rig. The key features of a high quality DTH tube are durability, accuracy and manageability.

High quality tubing

Secoroc tubes are made from cold drawn tubing, providing a superior surface finish and tolerance compared to their hot rolled counterparts. Our solution drastically reduces the risk of scaling – the cause of so many premature hammer failures.

No weak links

Traditionally, the threads and the joint between the tube and the end-pieces are vulnerable. To combat the problem, we've friction-welded the joints for maximum strength and heat-treated the end-pieces for optimum durability.

Never losing the thread

Heat-treating the threads ensures not only a long service life, but also simplifies joining and breaking – thereby cutting cycle time. To meet varying demands, we provide a selection of API threads. For applications where foam injection is used, we recommend the IF thread. Naturally, we also offer a wide range of subs and crossovers – all made of high quality steel and heat-treated in the same way as tube end-pieces.

Pipes

From Ø114 mm and wall thickness > 8,8 mm

Hot Rolled grade API J-55

Technical spec:

Tubing J-55

Tensile strength (RM) min. 530 N/mm²/75000 PSI

Yield strength (ReH) min. 390 N/mm²/55000 PSI

Elongation (A5) min 15%

Tool joints, adapters

Surface hardness 58-62 HRC

Depth 0, 1-0, 2 mm

Core hardness 32-36 HRC (approx 300 HB)

Hot rolled tubing fits inside the API N-80 standard but it has the following shortcomings:

1. The hot rolled surface is rough and can release scaling from the inside, which can enter into the hammer and cause severe damage to internal components.
2. A rough surface gives higher friction losses, resulting in a higher-pressure drop in the drill string.
3. Wide tolerance of the wall thickness +/- 10-12%
4. Straightness tolerance not assigned. Must be straightened after welding.
5. Production problems due to the wide tolerances.

Ø70–Ø114 mm and wall thickness ≤ 8,8 mm

Cold drawn tubing grade API N-80

Technical spec:

Tubing N-80

Tensile strength (RM) min. 690 N/mm²/100000 PSI

Yield strength (ReH) min. 550 N/mm²/ 80000 PSI

Elongation (A5) min 18%

Tool joints, adapters

Surface hardness 58-62 HRC

Depth 0, 1-0, 2 mm

Core hardness 32-36 HRC

In order to improve the quality of DTH tubes we are now changing over to cold drawn tubing and the features and benefits are as follows:

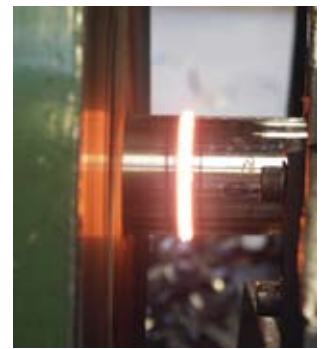
Feature	Hot Rolled Tubing	Cold Drawn Tubing
Ovality	Included in the tolerance for the wall	Included in the tolerance for the wall
Wall Thickness	+/- 10-12%	+/- 3-4%
Straightness	N/A	Max 1 mm/m

Benefits in short of cold drawn tubing

- Reliable wall thickness
- Less ovality. Less risk of eccentric wear.
- Better quality of the friction weld, less risk of concentricity of welding.
- Better wear resistance due to increased hardness.
- Reliable weights max 2-3% variance.
- Less risk of damage to the tube from the straightening operation.
- An overall weight reduction of our DTH tube assortment.
- Still API N-80 standard for the tubing.

Friction welding Ø70–Ø140 mm

Over 140 mm shrink fit and stick welded



Friction welding

- Friction welding is a safe and efficient way to weld the end pieces on to the tube material. The welding becomes stronger than the tube.
- Friction welding is a combination between friction and pressure.
- The end pieces rotate with a speed of 480 RPM and the pressure is between 70 and 150 Bar depending on the tube diameter and wall thickness.

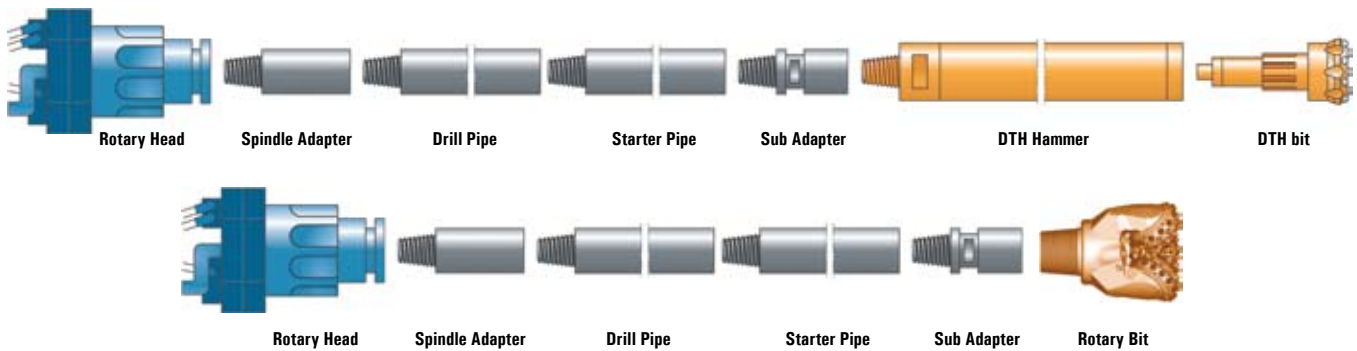


Friction welded

- Friction welding gives much stronger joints compared with electrode welding due to less risk of impure joints.

Down the hole drilling

Drill pipes



Rotary Head

The power unit that rotates the drill string.

Spindle Adapter

Also called a “saver sub”, threads into the rotary head and drill pipe, protects the threads of the rotary head, considered to be part of rotary head.

Drill Pipe

Available in a variety of lengths, diameters, wall thicknesses, and thread configurations.

Starter Pipe

Similar to the drill pipe, always the first pipe in the hole, usually shorter to compensate for the length of the DTH hammer, and of a greater wall thickness to withstand more abrasion as the hole is drilled.

Sub Adapter

Usually a short adapter, threaded on both ends in a male/female, female/female, or male/male configuration. May be used to increase or decrease the thread diameter, or change the thread style as needed for a particular application

DTH Hammer/DTH Bit

The percussive mechanism that drills the hole. Available in a wide range of diameters and styles depending on the application.

Rotary (Tri-Cone) Bit

May take the place of the DTH Hammer & Bit in applications where percussive drilling is not required.

Traditional Rig Application: DM30/45/50/L, T4W, T4BH, RD20

Diameter		Thread Pin/Box	Component	Wall Thickness		Length		Wrench Flats			Hex		Weight		Product No.	Catalogue No.
inch	mm	(except as noted)		inch	mm	feet	m	inch	mm	flat location	inch	mm	lbs	g		
3.50	89	2 3/8 API REG	PIPE	0.500	13	30.00	9.14	3.50	89	Both Ends	No	No	491	223000	57323917	210-8591-47, 55-12
3.50	89	2 3/8 API REG	PIPE	0.337	9	25.00	7.62	2.50	64	Both Ends	No	No	315	143000	56970775	210-8576-47, 40-08
3.50	89	2 3/8 API REG	STARTER PIPE	0.750	19	21.00	6.40	2.50	64	Both Ends	No	No	485	220000	57041592	210-8564-46, 55-19
3.50	89	2 3/8 API REG	STARTER PIPE	0.500	13	26.60	8.10	3.50	89	Both Ends	No	No	441	200000	57323925	210-8581-46, 55-12
4.00	102	2 7/8 API REG	PIPE	0.337	9	30.00	9.14	3.50	89	Pin Only	3.5	89	489	222000	57155806	212-8691-45, 40-08
4.00	102	2 7/8 API REG	PIPE	0.750	19	30.00	9.14	3.50	89	Pin Only	3.5	89	751	341000	57156317	212-8691-45, 55-19
4.00	102	2 7/8 API REG	PIPE	0.337	9	25.00	7.62	3.50	89	Pin Only	3.5	89	421	191000	50350156	212-8676-45, 40-08
4.00	102	2 7/8 API REG	PIPE	0.337	9	25.00	7.62	3.00	76	Both Ends	No	No	410	186000	57006769	212-8676-47, 40-08
4.00	102	2 7/8 API REG	PIPE	0.337	9	25.00	7.62	3.50	89	Both Ends	No	No	410	186000	56970791	212-8676-47, 40-08
4.00	102	2 7/8 API REG	STARTER PIPE	0.750	19	26.60	8.10	3.50	89	Pin Only	No	No	520	236000	57155822	212-8681-46, 55-19
4.00	102	2 7/8 API REG	STARTER PIPE	0.337	9	21.00	6.40	3.00	76	Both Ends	No	No	313	142000	56995863	212-8664-46, 40-08
4.00	102	2 7/8 API REG	STARTER PIPE	0.337	9	21.00	6.40	3.50	89	Both Ends	No	No	313	142000	56970809	212-8664-46, 40-08
4.00	102	2 7/8 API REG	STARTER PIPE	0.750	19	21.00	6.40	3.50	89	Both Ends	No	No	388	176000	56952567	212-8664-46, 55-19
4.50	114	2 7/8 IF	PIPE	0.337	9	25.00	7.62	3.50	89	Pin Only	4.00	102	411.89	187000	52202033	213-8776-45, 40-08
4.50	114	2 7/8 IF	STARTER PIPE	0.625	16	21.00	6.40	3.50	89	Both Ends	No	No	583.7	265000	52202470	213-8764-46, 55-16
4.50	114	2 7/8 IF	PIPE	0.337	9	30.00	9.14	3.50	89	Pin Only	4.00	102	489	222000	52256369	213-8791-45, 40-08
4.50	114	2 7/8 IF	PIPE	0.337	9	20.00	6.10	3.50	89	Box Only	No	No	344	156000	57690448	213-8761-47, 40-08
4.50	114	3 1/2 API REG	PIPE	0.625	16	25.00	7.62	3.50	89	Pin Only	4.00	102	833	378000	50262187	214-8776-45, 55-16
4.50	114	3 1/2 API REG	PIPE	0.337	9	30.00	9.14	3.50	89	Pin Only	4.00	102	489	222000	57136228	214-8791-45, 40-08
4.50	114	3 1/2 API REG	PIPE	0.750	19	30.00	9.14	3.50	89	Pin Only	4.00	102	989	449000	57155780	214-8791-45, 55-19
4.50	114	3 1/2 API REG	PIPE	0.500	13	30.00	9.14	3.50	89	Pin Only	4.00	102	667	303000	57178824	214-8791-45, 55-12
4.50	114	3 1/2 API REG	PIPE	0.430	11	35.00	10.67	3.50	89	Pin Only	4.00	102	760	345000	57435455	214-87A7-45, 55-12

Down the hole drilling

Drill pipes

Traditional Rig Application: DM30/45/50/L, T4W, T4BH, RD20

Diameter		Thread Pin/Box (except as noted)	Component	Wall Thickness		Length		Wrench Flats		Hex		Weight		Product No.	Catalogue No.	
inch	mm			inch	mm	feet	m	inch	mm	flat location	inch	mm	lbs			g
4.50	114	3 1/2 API REG	STARTER PIPE	0.750	19	26.60	8.10	3.50	89	Pin Only	No	No	855	388000	57156663	214-8781-46, 55-19
4.50	114	3 1/2 IF	PIPE	0.337	9	20.00	6.10	3.50	89	Box Only	No	No	344	156000	57690430	215-8761-47, 40-08
5.00	127	3 1/2 API REG	PIPE	0.375	10	25.00	7.62	3.50	89	Pin Only	4.00	102	562	255000	50348358	214-8876-45, 55-08
5.00	127	3 1/2 API REG	PIPE	0.500	13	25.00	7.62	3.50	89	Pin Only	4.00	102	630	286000	50452697	214-8876-45, 55-12
5.00	127	3 1/2 API REG	PIPE	0.750	19	25.00	7.62	3.50	89	Pin Only	4.00	102	907	412000	52185261	214-8876-45, 55-19
5.00	127	3 1/2 API REG	PIPE	0.500	13	30.00	9.14	3.50	89	Pin Only	4.00	102	756	343000	57155798	214-8891-45, 55-12
5.00	127	3 1/2 API REG	PIPE	0.337	9	30.00	9.14	3.50	89	Pin Only	4.00	102	837	380000	57155814	214-8891-45, 55-08
5.00	127	3 1/2 API REG	PIPE	0.750	19	30.00	9.14	3.50	89	Pin Only	4.00	102	1081	491000	57354557	214-8891-45, 55-19
5.00	127	3 1/2 API REG	PIPE	0.500	13	35.00	10.67	3.50	89	Pin Only	4.00	102	874	397000	57450454	214-88A7-45, 55-12
5.00	127	3 1/2 API REG	PIPE	0.750	19	35.00	10.67	3.50	89	Pin Only	4.00	102	1264	574000	57518714	214-88A7-45, 55-19
5.00	127	3 1/2 API REG	STARTER PIPE	0.750	19	26.60	8.10	3.50	89	Both Ends	No	No	980	445000	57155830	214-8881-46, 55-19
5.00	127	3 1/2 API REG	STARTER PIPE	0.375	10	21.60	6.55	3.50	89	Both Ends	No	No	485	220000	50348333	214-8866-46, 55-08
5.00	127	3 1/2 API REG	STARTER PIPE	0.750	19	29.60	8.99	3.50	89	Both Ends	No	No	1086	493000	57450447	214-8890-46, 55-19
5.00	127	3 1/2 API REG	STARTER PIPE	0.750	19	31.60	9.60	3.50	89	Both Ends	No	No	1159	526000	57518706	214-8896-46, 55-19
5.00	127	3 1/2 BECO	PIPE	0.750	19	30.00	9.14	3.50	89	Pin Only	4.62	117	1097	498000	57236903	2B1-8891-45, 55-19
5.00	127	3 1/2 BECO	PIPE	0.500	13	30.00	9.14	3.50	89	Pin Only	4.62	117	773	351000	57439572	2B1-8891-45, 55-12
5.00	127	3 1/2 BECO	PIPE	0.500	13	35.00	10.67	3.50	89	Pin Only	4.62	117	892	405000	57469033	2B1-88A7-45, 55-12
5.00	127	3 1/2 BECO	PIPE	0.500	13	25.00	7.62	3.50	89	Pin Only	4.62	117	654	297000	57663015	2B1-8876-45, 55-12
5.00	127	3 1/2 BECO	STARTER PIPE	0.500	13	26.60	8.10	3.50	89	Pin Only	No	No	573	260000	57439721	2B1-8881-46, 55-12
5.00	127	3 1/2 BECO	STARTER PIPE	0.500	13	21.60	6.55	3.50	89	Pin Only	No	No	551	250000	57663023	2B1-8866-46, 55-12
5.50	140	3 1/2 BECO	PIPE	0.415	11	25.00	7.62	4.50	114	Both Ends	5.00	127	733.48	333000	52206976	2B1-8976-45, 55-12
5.50	140	3 1/2 BECO	PIPE	0.415	11	30.00	9.14	4.50	114	Both Ends	5.00	127	865.63	393000	57178865	2B1-8991-45, 55-12
5.50	140	3 1/2 BECO	PIPE	0.750	19	30.00	9.14	4.50	114	Both Ends	5.00	127	1240.0	563000	57290322	2B1-8991-45, 55-19
5.50	140	3 1/2 BECO	PIPE	0.750	19	25.00	7.62	4.50	114	Both Ends	5.00	127	1044.0	474000	57473498	2B1-8976-45, 55-19
5.50	140	3 1/2 BECO	PIPE	0.750	19	35.00	10.67	4.50	114	Both Ends	5.00	127	1433.9	651000	57523557	2B1-89A7-45, 55-19
5.50	140	3 1/2 BECO	STARTER PIPE	0.415	11	25.80	7.82	4.50	114	Both Ends	No	No	685.02	311000	57178766	2B1-8978-46, 55-12
5.50	140	3 1/2 BECO	STARTER PIPE	0.415	11	20.80	6.30	4.50	114	Both Ends	No	No	621.14	282000	57236184	2B1-8963-46, 55-12
6.25	159	4 BECO	PIPE	0.500	13	25.00	7.62	4.50	114	Both Ends	5.00	127	867.84	394000	52259009	2B2-9376-45, 55-12
6.25	159	4 BECO	PIPE	0.500	13	30.00	9.14	4.50	114	Both Ends	5.00	127	1013.2	460000	57178873	2B2-9391-45, 55-12
6.25	159	4 BECO	PIPE	0.750	19	30.00	9.14	4.50	114	Both Ends	5.00	127	1447.1	657000	57376477	2B2-9391-45, 55-19
6.25	159	4 BECO	PIPE	0.500	13	35.00	10.67	4.50	114	Both Ends	5.00	127	993.39	451000	57415945	2B2-93A7-45, 55-12
6.25	159	4 BECO	PIPE	0.750	19	35.00	10.67	4.50	114	Both Ends	5.00	127	1678.4	762000	57415952	2B2-93A7-45, 55-19
6.25	159	4 BECO	STARTER PIPE	0.500	13	25.80	7.82	4.50	114	Both Ends	No	No	898.68	408000	57178774	2B2-9378-46, 55-12
6.25	159	4 BECO	STARTER PIPE	0.500	13	20.80	6.30	4.50	114	Both Ends	No	No	746.7	339000	57139164	2B2-9363-46, 55-12
7.00	178	4 1/2 BECO	PIPE	0.750	19	25.00	7.62	5.00	127	Pin Only	6.00	152	1409.7	640000	57198277	2B3-9276-45, 55-19
7.00	178	4 1/2 BECO	PIPE	0.750	19	30.00	9.14	5.00	127	Pin Only	6.00	152	1671.8	759000	57294894	2B3-9291-45, 55-19
7.00	178	4 1/2 BECO	PIPE	0.750	19	35.00	10.67	5.00	127	Pin Only	6.00	152	1944.9	883000	57495434	2B3-92A7-45, 55-19
7.00	178	4 1/2 BECO	PIPE	0.500	13	30.00	9.14	5.00	127	Pin Only	6.00	152	1174.0	533000	57178881	2B3-9291-45, 55-12
7.00	178	4 1/2 BECO	PIPE	0.500	13	25.00	7.62	5.00	127	Both Ends	6.00	152	1041.9	473000	57708372	2B3-9276-45, 55-12
7.00	178	4 1/2 BECO	PIPE	0.500	13	30.00	9.14	5.00	127	Both Ends	6.00	152	1200.4	545000	57708398	2B3-9291-45, 55-12
7.00	178	4 1/2 BECO	PIPE	0.500	13	35.00	10.67	5.00	127	Both Ends	6.00	152	1372.2	623000	57708406	2B3-92A7-45, 55-12
7.00	178	4 1/2 BECO	PIPE	0.750	19	30.00	9.14	6.00	152	Both Ends	6.50	165	1702.6	773000	57716755	2B3-9291-45, 55-19
7.00	178	4 1/2 BECO	PIPE	1.000	25	25.00	7.62	6.00	152	Both Ends	6.50	165	1442.7	655000	57716763	2B3-9276-45, 55-25
7.00	178	4 1/2 BECO	STARTER PIPE	0.500	13	25.66	7.82	5.00	127	Pin End	No	No	1204.8	547000	57178782	2B3-9278-46, 55-12
								4.50	114	Box End						
7.62	194	5 1/4 BECO	PIPE	0.750	19	25.00	7.62	6.00	152	Both Ends	6.50	165	1570.5	713000	57336877	2B5-9476-45, 55-19
7.62	194	5 1/4 BECO	PIPE	0.875	22	25.00	7.62	5.00	127	Pin Only	6.50	165	1709.3	776000	57006868	2B5-9476-45, 55-22
7.62	194	5 1/4 BECO	PIPE	0.750	19	30.00	9.14	6.00	152	Both Ends	6.50	165	1856.8	843000	57225518	2B5-9491-45, 55-19
7.62	194	5 1/4 BECO	PIPE	0.750	19	30.00	9.14	6.75	171	Both Ends	No	No	1876.7	852000	57078784	2B5-9491-47, 55-19
7.62	194	5 1/4 BECO	PIPE	1.000	25	30.00	9.14	6.00	152	Both Ends	6.50	165	2220.3	1008000	57382657	2B5-9491-45, 55-25

Down the hole drilling

Drill pipes

Traditional Rig Application: DM-H, DMM-2

Diameter		Thread	Component	Wall Thickness		Length		Wrench Flats			Hex		Weight		Product No.	Catalogue No.
inch	mm	Pin/Box		inch	mm	feet	m	inch	mm	flat location	inch	mm	lbs	g		
7.00	178	4 1/2 BECO	PIPE	0.625	16	35.00	10.67	5.75	146	Both Ends	No	No	1618.9	735000	57134165	2B3-92A7-59, 55-16
7.00	178	4 1/2 BECO	PIPE	1.000	25	35.00	10.67	5.75	146	Both Ends	No	No	2077.1	943000	57200404	2B3-92A7-59, 55-25
7.00	178	4 1/2 BECO	PIPE	0.750	19	35.00	10.67	5.75	146	Both Ends	No	No	1944.9	883000	57312050	2B3-92A7-59, 55-19
7.00	178	4 1/2 BECO	STARTER PIPE	1.000	25	30.30	9.22	5.75	146	Both Ends	No	No	1759.9	799000	57209058	2B3-9292-60, 55-25
7.00	178	4 1/2 BECO	STARTER PIPE	0.750	19	29.00	8.84	5.75	146	Both Ends	No	No	1651.9	750000	57312068	2B3-9288-60, 55-19
7.00	178	5 1/4 BECO	PIPE	0.625	16	35.00	10.67	6.50	165	Both Ends	No	No	1618.9	735000	57110454	2B5-92A7-59, 55-16
7.00	178	5 1/4 BECO	STARTER PIPE	0.625	16	31.90	9.68	6.50	165	Both Ends	No	No	1478	671000	57111338	2B5-9297-60, 55-16
7.00	178	5 1/4 BECO	STARTER PIPE	0.625	16	32.90	9.98	6.50	165	Both Ends	No	No	1522	691000	57110777	2B5-92A0-60, 55-16
7.62	194	5 1/4 BECO	PIPE	1.000	25	45.00	13.72	6.75	171	Both Ends	No	No	2920.7	1326000	57526493	2B5-94D7-59, 55-25
7.62	194	5 1/4 BECO	PIPE	0.750	19	45.00	13.72	6.75	171	Both Ends	No	No	2740.1	1244000	56978992	2B5-94D7-59, 55-19
7.62	194	5 1/4 BECO	PIPE	1.000	25	35.00	10.67	6.75	171	Both Ends	No	No	2222.5	1009000	57204976	2B5-94A7-59, 55-25
7.62	194	5 1/4 BECO	PIPE	0.750	19	35.00	10.67	6.75	171	Both Ends	No	No	1962.6	891000	58248956	2B5-94A7-59, 55-19
7.62	194	5 1/4 BECO	STARTER PIPE	1.000	25	32.90	9.98	6.75	171	Both Ends	No	No	2407.5	1093000	57218661	2B5-94A0-60, 55-25
8.62	219	6 BECO	PIPE	0.906	23	50.00	15.24	7.75	197	Both Ends	No	No	5409.7	2456000	57423204	2B6-97F2-59, 55-22
8.62	219	6 BECO	STARTER PIPE	1.000	25	32.90	9.98	7.75	197	Both Ends	No	No	2878.9	1307000	57468845	2B6-97A0-60, 55-25
10.75	273	8 BECO	PIPE	1.000	25	6.83	2.08	9.25	235	Both Ends	No	No	1306.2	593000	57003162	2B8-9621-59, 55-25

Traditional Rig Application: DMM-3

Diameter		Thread	Component	Wall Thickness		Length		Wrench Flats			Hex		Weight		Product No.	Catalogue No.
inch	mm	Pin/Box		inch	mm	feet	m	inch	mm	flat location	inch	mm	lbs	g		
7.00	178	4 1/2 BECO	PIPE	1.000	25	40.00	12.19	5.75	146	Both Ends	No	No	2394.3	1087000	57351306	2B3-92C2-59, 55-25
7.62	194	5 1/4 BECO	PIPE	1.000	25	40.00	12.19	6.75	171	Both Ends	No	No	3222.5	1463000	57347478	2B5-94C2-59, 55-25
8.62	219	6 BECO	PIPE	1.000	25	40.00	12.19	7.75	197	Both Ends	No	No	4594.7	2086000	57347163	2B6-97C2-59, 55-25
10.75	273	8 BECO	PIPE	1.000	25	40.00	12.19	9.25	235	Both Ends	No	No	5471.4	2484000	57315509	2B8-96C2-59, 55-25

Traditional Rig Application: ECM695/760/780

Diameter		Thread	Component	Wall Thickness		Length		Wrench Flats			Hex		Weight		Product No.	Catalogue No.
inch	mm	Pin/Box		inch	mm	feet	m	inch	mm	flat location	inch	mm	lbs	g		
3.00	76	2 Z	PIPE	0.250	6	13.00	4.00	2.25	57	Both Ends	No	No	104	47000	51788479	221-8440-65, 40-06
3.00	76	2 Z	PIPE	0.500	9	13.00	4.00	2.25	57	Both Ends	No	No	176	80000	51988939	221-8440-65, 55-08
3.00	76	2 Z	STARTER PIPE	0.250	6	8.80	2.60	2.25	57	Both Ends	No	No	73	33000	51862472	221-8426-66, 40-06
3.00	76	2 Z PIN, 2 3/8 API REG Box	STARTER PIPE	0.500	9	8.00	2.44	2.25	57	Both Ends	No	No	132	60000	51985885	221-8429-66-10, 40-08
3.00	76	2 3/8 API REG	PIPE	0.254	6	10.00	3.05	2.25	57	Both Ends	No	No	79	36000	50364488	210-8430-65, 40-06
3.50	89	2 1/2 Z	PIPE	0.254	6	13.00	4.00	2.74	70	Both Ends	No	No	126	57000	57699050	222-8540-65, 40-06
3.50	89	2 1/2 Z PIN, 2 3/8 API REG Box	STARTER PIPE	0.368	9	8.86	2.70	1.75	44	Pin Only	No	No	106	48000	52137031	210-8527-66-22, 40-08
3.50	89	2 1/2 Z PIN, 3 1/2 API REG Box	STARTER PIPE	0.368	9	9.00	2.74	2.74	70	Both Ends	No	No	110	50000	57699035	214-8527-66-22, 40-08
4.00	102	2 1/2 Z	PIPE	0.250	6	13.00	4.00	3.00	76	Both Ends	No	No	148	67000	51788487	222-8640-65, 40-06
4.00	102	2 1/2 Z	STARTER PIPE	0.250	6	8.00	2.44	3.00	76	Both Ends	No	No	95	43000	51788651	222-8624-66, 40-06
4.00	102	2 1/2 Z PIN, 3 1/2 API REG Box	PIPE	0.500	13	13.00	4.00	3.00	76	Both Ends	No	No	249	113000	52296696	214-8640-65-22, 40-12
4.00	102	2 1/2 Z PIN, 3 1/2 API REG Box	STARTER PIPE	0.500	9	9.00	2.74	3.00	76	Both Ends	No	No	88	40000	51985893	222-8627-66-14, 40-08

Down the hole drilling

Drill pipes

Traditional Rig Application: PV-271

Diameter		Thread Pin/Box	Component	Wall Thickness		Length		Wrench Flats			Hex		Weight		Product No.	Catalogue No.
inch	mm			inch	mm	feet	m	inch	mm	flat location	inch	mm	lbs	g		
4.50	114	3 1/2 API REG	PIPE	0.337	9	25.00	7.62	3.50	89	Pin Only	4.00	102	411.89	187000	50425859	214-8776-59, 40-08
4.50	114	3 1/2 API REG	STARTER PIPE	0.625	16	21.60	6.55	3.50	89	Both Ends	No	No	596.92	271000	50426238	214-8766-60, 55-16
5.50	140	4 FH	PIPE	0.415	11	25.00	7.62	4.50	114	Both Ends	5.00	127	733.48	333000	50426493	221-8976-59, 55-12
7.62	194	4 1/2 BECO	PIPE	0.500	13	20.00	6.10	6.00	152	Both Ends	6.50	165	922.91	419000	52342011	2B3-9461-59, 55-12
7.62	194	4 1/2 BECO	PIPE	0.500	13	30.00	9.14	6.00	152	Both Ends	6.50	165	1297.4	589000	57769358	2B3-9491-59, 55-12
7.62	194	4 1/2 BECO	PIPE	0.500	13	25.00	7.62	6.00	152	Both Ends	6.50	165	1110.1	504000	57769366	2B3-9476-59, 55-12
7.62	194	5 1/4 BECO	PIPE	0.750	19	8.00	2.44	6.75	171	Both Ends	No	No	625.55	284000	57756355	2B5-9424-59, 55-19
7.62	194	5 1/4 BECO	STARTER PIPE	0.750	19	25.00	7.62	6.75	171	Both Ends	No	No	1524.2	692000	57756348	2B5-9476-60, 55-19

Traditional Rig Application: PV-351

Diameter		Thread Pin/Box	Component	Wall Thickness		Length		Wrench Flats			Hex		Weight		Product No.	Catalogue No.
inch	mm			inch	mm	feet	m	inch	mm	flat location	inch	mm	lbs	g		
7.62	194	5 1/4 BECO	PIPE	2.000	51	35.00	10.67	6.62	168	Both Ends	No	No	3830.4	1739000	57583569	2B5-94A7-59, 55-51
8.62	219	6 BECO	PIPE	2.000	51	35.00	10.67	7.75	197	Both Ends	No	No	4995.6	2268000	57583239	2B6-97A7-59, 55-51
10.75	273	8 BECO	PIPE	1.000	25	35.00	10.67	9.25	235	Both Ends	No	No	4511	2048000	57583437	2B8-96A7-59, 55-25
12.75	324	8 BECO	PIPE	1.000	25	35.00	10.67	10.50	267	Both Ends	No	No	5026.4	2282000	57583445	2B8-99A7-59, 55-25
13.38	340	10 BECO	PIPE	1.000	25	35.00	10.67	11.38	289	Both Ends	No	No	5264.3	2390000	57583452	2BA-A0A7-59, 55-25

Traditional Rig Application: T2, T3, TH60/75E/100A

Diameter		Thread Pin/Box	Component	Wall Thickness		Length		Wrench Flats			Hex		Weight		Product No.	Catalogue No.
inch	mm			inch	mm	feet	m	inch	mm	flat location	inch	mm	lbs	g		
3.50	89	2 3/8 IF	PIPE	0.368	9	20.00	6.10	2.75	89	Box Only	No	No	229.07	104000	58160896	211-8561-48, 40-08
4.50	114	2 7/8 IF	PIPE	0.337	9	20.00	6.10	3.50	89	Box Only	No	No	343.61	156000	58160953	213-8761-48, 40-08
4.50	114	3 1/2 API REG	PIPE	0.337	9	20.00	6.10	3.50	89	Box Only	No	No	343.61	156000	58160912	214-8761-48, 40-08

Traditional Rig Application: Atlas Copco Simba Rig

Diameter		Thread Pin/Box	Wall Thickness		Length		Circular Grip		Weight		Product No.	Catalogue No.
inch	mm		inch	mm	feet	m	inch	mm	lbs	g		
3 1/2	89	2 3/8 API REG	1/8	4.0	6.15	1.875	2 3/8	70	57	26000	89009306	210-8518-41, 40-04
4 1/2	114	3 1/2 API REG	1/4	6.3	6.15	1.875	3 3/4	95	104	47000	89009307	214-8719-41, 40-06

Traditional Rig Application: Atlas Copco ROC F6/L6/L8

Standard lengths:	Diameter		Thread Pin/Box	Wall Thickness		Length			Weight		Product No.	Catalogue No.
	inch	mm		inch	mm	feet	m		lbs	g		
ROC F6 = 4.0m	3	76	2 3/8 API REG	1/4	6.3	13.12	4.00	No wrench flats	106	48200	89009398	210-8440-44, 40-06
ROC L8 = 6.0m	3	76	2 3/8 API REG	1/4	6.3	16.40	5.00	No wrench flats	128	58300	89000444	210-8450-44, 40-06
ROC 830 = 4.0m												
ROC 860 = 5.0m	3 1/2	89	2 3/8 API REG	1/4	6.3	13.12	4.00	No wrench flats	133	60300	89000445	210-8540-44, 40-06
ROC 936 = 6.0m	3 1/2	89	2 3/8 API REG	1/4	6.3	16.40	5.00	No wrench flats	164	74600	89000442	210-8550-44, 40-06

Down the hole drilling

Drill pipes

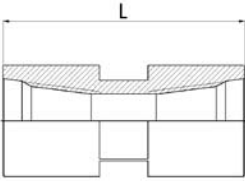
Traditional Rig Application: Atlas Copco ROC F6/L6/L8

Standard lengths:	Diameter		Thread Pin/Box	Wall Thickness		Length			Weight		Product No.	Catalogue No.
	inch	mm		inch	mm	feet	m		lbs	g		
ROC F6 = 4.0m	3 1/2	89	2 3/8 API REG	1/4	6.3	19.68	6.00	No wrench flats	184	83400	89009556	210-8560-44, 40-06
ROC L6 = 5.0m or 4.0m <i>(check configuration of the rig)</i>	3 1/2	89	2 3/8 API REG	1/3	8.8	19.68	6.00	No wrench flats	280	127200	89000999	210-8560-44, 40-08
ROC L8 = 6.0m	4	102	2 7/8 API REG	1/4	6.3	13.12	4.00	No wrench flats	152	69000	89000648	212-8640-44, 40-06
ROC 830 = 4.0m	4	102	2 7/8 API REG	1/4	6.3	16.40	5.00	No wrench flats	197	89600	89000681	212-8650-44, 40-06
ROC 860 = 5.0m	4	102	2 7/8 API REG	1/4	6.3	19.68	6.00	No wrench flats	232	105300	89000698	212-8660-44, 40-06
ROC 936 = 6.0m	4 1/2	114	3 1/2 API REG	1/4	6.3	19.68	6.00	No wrench flats	254	115300	89009355	214-8760-44, 40-06
	4 1/2	114	3 1/2 API REG	1/3	8.8	19.68	6.00	No wrench flats	350	159000	89000982	217-8960-44, 40-08
	5 1/2	140	4 1/2 API REG	1/3	8.8	19.68	6.00	No wrench flats	442	200500	89000882	217-8960-44, 40-08

Traditional Rig Application: Various Rig Applications

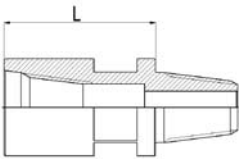
Diameter		Thread Pin/Box	Wall Thickness		Length		Wrench Flats			Weight		Product No.	Catalogue No.
inch	mm		inch	mm	feet	m	inch	mm	flat location	lbs	g		
2 3/8	70	RD 50-6	1/6	4.0	9.8	3.00	2 1/8	55	Both Ends	51	23200	89009467	240-8330, 40-04
3	76	RD 50-6	1/6	4.0	4.9	1.50	2 3/8	65	Both Ends	35	16000	89009174	240-8415, 40-04
3	76	RD 50-6	1/6	4.0	6.6	2.00	2 3/8	65	Both Ends	42	19000	89009175	240-8420, 40-04
3	76	RD 50-6	1/6	4.0	9.8	3.00	2 3/8	65	Both Ends	57	26000	89009176	240-8430, 40-04
3	76	2 3/8 API REG	1/6	4.0	3.3	1.00	2 3/8	65	Both Ends	24	11000	89009469	210-8410, 40-04
3	76	2 3/8 API REG	1/6	4.0	4.9	1.50	2 3/8	65	Both Ends	33	15000	89009468	210-8415, 40-04
3	76	2 3/8 API REG	1/6	4.0	6.6	2.00	2 3/8	65	Both Ends	40	18000	89009489	210-8420, 40-04
3	76	2 3/8 API REG	1/6	4.0	9.8	3.00	2 3/8	65	Both Ends	55	25000	89009470	210-8430, 40-04
3	76	2 3/8 API REG	1/4	6.3	3.3	1.00	2 3/8	65	Both Ends	31	14000	89009345	210-8410, 40-06
3	76	2 3/8 API REG	1/4	6.3	4.9	1.50	2 3/8	65	Both Ends	44	20000	89009346	210-8415, 40-06
3	76	2 3/8 API REG	1/4	6.3	6.6	2.00	2 3/8	65	Both Ends	55	25000	89009347	210-8420, 40-06
3	76	2 3/8 API REG	1/4	6.3	9.8	3.00	2 3/8	65	Both Ends	79	36000	89009348	210-8430, 40-06
3 1/2	89	2 3/8 API REG	1/6	4.0	3.3	1.00	2 3/8	65	Both Ends	31	14000	89009194	210-8510, 40-04
3 1/2	89	2 3/8 API REG	1/6	4.0	4.9	1.50	2 3/8	65	Both Ends	40	18000	89009471	210-8515, 40-04
3 1/2	89	2 3/8 API REG	1/6	4.0	6.6	2.00	2 3/8	65	Both Ends	51	23000	89009490	210-8520, 40-04
3 1/2	89	2 3/8 API REG	1/6	4.0	9.8	3.00	2 3/8	65	Both Ends	68	31000	89009472	210-8530, 40-04
3 1/2	89	2 3/8 API REG	1/4	6.3	3.3	1.00	2 3/8	65	Both Ends	37	17000	89009209	210-8510, 40-06
3 1/2	89	2 3/8 API REG	1/4	6.3	4.9	1.50	2 3/8	65	Both Ends	53	24000	89009479	210-8515, 40-06
3 1/2	89	2 3/8 API REG	1/4	6.3	6.6	2.00	2 3/8	65	Both Ends	66	30000	8909270	210-8520, 40-06
3 1/2	89	2 3/8 API REG	1/4	6.3	9.8	3.00	2 3/8	65	Both Ends	95	43000	89009473	210-8530, 40-06
3 1/2	89	2 3/8 API REG	1/4	6.3	9.8	3.00	2 3/8	65	Both Ends	95	43000	89009220	212-8530, 40-06
4	102	2 7/8 API REG	1/4	6.3	9.8	3.00	3	75	Both Ends	115	52000	89009423	212-8630, 40-06
4 1/2	114	3 1/2 API REG	1/6	4.0	9.8	3.00	3 3/4	95	Both Ends	101	46000	89009446	214-8730, 40-04
4 1/2	114	3 1/2 API REG	1/4	6.3	3.3	1.00	3 3/4	95	Both Ends	59	27000	89009229	214-8710, 40-06
4 1/2	114	3 1/2 API REG	1/4	6.3	4.9	1.50	3 3/4	95	Both Ends	77	35000	89009475	214-8715, 40-06
4 1/2	114	3 1/2 API REG	1/4	6.3	6.6	2.00	3 3/4	95	Both Ends	97	44000	89009230	214-8720, 40-06
4 1/2	114	3 1/2 API REG	1/4	6.3	9.8	3.00	3 3/4	95	Both Ends	132	60000	89009470	214-8730, 40-06
4 1/2	114	3 1/2 API REG	1/4	6.3	14.8	4.50	3 3/4	95	Both Ends	189	86000	89009480	214-8745, 40-06
4 1/2	114	3 1/2 API REG	1/4	6.3	19.7	6.00	3 3/4	95	Both Ends	244	111000	89009477	214-8760, 40-06
4 1/2	114	3 1/2 API REG	1/3	8.8	3.3	1.00	3 3/4	95	Both Ends	65	29500	89009365	214-8710, 40-08
4 1/2	114	3 1/2 API REG	1/3	8.8	6.6	2.00	3 3/4	95	Both Ends	119	54000	89009367	214-8720, 40-08
4 1/2	114	3 1/2 API REG	1/3	8.8	9.8	3.00	3 3/4	95	Both Ends	170	77000	89009368	214-8730, 40-08
4 1/2	114	3 1/2 API REG	1/3	8.8	19.7	6.00	3 3/4	95	Both Ends	295	134000	59009370	214-8760, 40-08
3 1/2	89	2 3/8 IF	1/4	6.3	6.6	2.00	2 3/8	65	Both Ends	68	31000	89009213	211-8520, 40-06
3 1/2	89	2 3/8 IF	1/6	4.0	9.8	3.00	2 3/8	65	Both Ends	68	31000	89009354	211-8530, 40-04
4 1/2	114	2 7/8 IF	1/4	6.3	19.7	6.00	3 3/4	95	Both Ends	247	112000	89009228	213-8760, 40-06

Box to Box
(female to female)



Diameter		Length		Configuration			Flats		Weight		Product No.	Catalogue No.
inch	mm	inch	mm	Box	Box	inch	mm	lbs	g			
3.00	77	5.50	140	Box/Box	2 3/8 API REG	RD 50-6	2.56	65	9	4000	89009257	340-1077-10-14, 41
3.00	77	7.90	200	Box/Box	2 3/8 API REG	2 3/8 API REG	2.56	65	10	4500	89009261	310-1077-10-20, 41
3.50	89	7.90	200	Box/Box	2 3/8 API REG	2 3/8 API REG	2.56	65	13	6000	89009482	310-1090-10-20, 41
3.50	89	20.00	508	Box/Box	2 3/8 API REG	2 3/8 IF	2.75	70	37	17000	58135732	311-1089-10-51, 41
4.50	114	7.00	178	Box/Box	RD 70-4	3 1/2 API REG	3.75	95	18	8000	89009259	342-1115-14-18, 41
4.50	114	10.00	254	Box/Box	2 7/8 API REG	3 1/2 API REG	4.00	102	22	10000	56934789	314-1114-12-25, 41
4.50	114	8.25	210	Box/Box	2 3/8 API REG	3 1/2 API REG	3.75	95	22	10000	89009483	310-1115-14-21, 41
4.75	121	12.00	305	Box/Box	3 1/2 API REG	3 1/2 API REG	4.00	102	40	18000	56930563	314-1121-14-30, 41
5.50	140	12.00	305	Box/Box	4 1/2 API REG	4 1/2 API REG	5.00	127	51	23000	57730756	317-1140-17-30, 41
5.50	140	24.00	610	Box/Box	4 1/2 API REG	2 7/8 IF	No	No	64	29000	58135856	313-1140-17-61, 41

Box to Pin
(female to male)

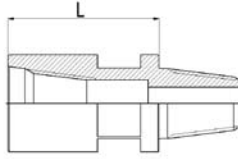


Diameter		Length		Configuration		Flats		Weight		Product No.	Catalogue No.
inch	mm	inch	mm	Box	Pin	inch	mm	lbs	g		
3.00	76	11.81	300	2 3/8 API REG	2 Z	2.62	67	15	7000	51862506	310-2076-21-30, 41
3.00	76	5.72	145	2 3/8 API REG	RD 50-6	2.56	65	9	4000	89009286	310-2077-40-14, 41
3.00	76	5.50	140	2 3/8 API REG	2 3/8 API REG	2.56	65	9	4000	89009288	310-2077-10-14, 41
3.50	89	14.00	356	2 3/8 API REG	3 1/2 IF	2.50	64	46	21000	56938665	310-2089-15-36, 41
3.50	89	5.50	140	2 3/8 API REG	2 3/8 API REG	2.56	65	13	6000	89009496	310-2090-10-14, 41
3.75	95	5.13	130	2 3/8 API REG	2 7/8 API REG	2.56	65	18	8000	89009492	310-2095-12-13, 41
4.00	102	5.50	140	2 3/8 API REG	2 7/8 API REG	3.00	76	18	8200	89009088	310-2102-12-14, 41
4.00	102	5.13	130	2 3/8 API REG	2 3/8 API REG	3.00	76	17	7800	89009087	310-2102-10-13, 41
4.50	115	4.72	120	2 3/8 API REG	3 1/2 API REG	3.75	95	19	8500	89009491	310-2115-14-12, 41
3.50	90	6.00	152	2 7/8 API REG	2 3/8 API REG	2.56	65	14	6500	89009011	312-2090-10-15, 41
4.00	102	9.00	229	2 7/8 API REG	2 7/8 API REG	3.50	89	24	11000	57155921	312-2102-12-23, 41
4.00	102	14.00	356	2 7/8 API REG	3 1/2 IF	3.00	76	55	25000	56996317	312-2102-15-36, 41
5.75	146	19.00	483	2 7/8 API REG	4 IF	3.50	89	73	33000	57085425	312-2146-19-48, 41
6.00	152	19.00	483	2 7/8 API REG	4 IF	3.50	89	123	56000	57093163	312-2152-19-48, 41
5.00	127	19.00	483	2 7/8 IF	4 FH	3.50	89	79	36000	52215464	313-2127-21-48, 41
5.00	127	42.00	1067	2 7/8 IF	4 FH	3.50	89	183	83000	57048514	313-2127-21-107, 41
5.00	127	54.00	1372	2 7/8 IF	4 FH	3.50	89	236	107000	57233249	313-2127-21-137, 41
5.50	140	9.50	241	2 7/8 IF	4 FH	3.50	89	53	24000	57620544	313-2140-21-24, 41

Down the hole drilling

Subs

Box to Pin (female to male)



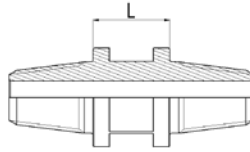
Diameter		Length		Configuration		Flats		Weight		Product No.	Catalogue No.
inch	mm	inch	mm	Box	Pin	inch	mm	lbs	g		
4.00	102	13.38	340	3 1/2 API REG	2 1/2 Z	3.00	76	24	11000	51788644	314-2102-Z3-34, 41
4.00	102	12.00	305	3 1/2 API REG	2 7/8 API REG	3.00	76	32	14500	56996663	314-2102-12-30, 41
4.00	102	9.00	229	3 1/2 API REG	2 7/8 API REG	3.50	89	24	11000	57155913	314-2102-12-23, 41
4.50	114	8.62	219	3 1/2 API REG	2 3/8 API REG	3.75	95	27.5	12500	89009495	314-2115-10-22, 41
4.50	114	11.75	299	3 1/2 API REG	2 3/8 API REG	3.75	95	35.7	16200	89000860	314-2115-10-30, 41
4.50	114	10.00	254	3 1/2 API REG	2 Z	3.50	89	22	10000	51031318	314-2114-Z1-25, 41
4.50	114	6.29	160	3 1/2 API REG	2 7/8 API REG	3.75	95	16	7500	89009051	314-2115-12-16, 41
4.50	114	6.29	160	3 1/2 API REG	2 7/8 IF	3.75	95	18	8000	89009053	314-2115-13-16, 41
4.50	114	6.29	160	3 1/2 API REG	3 1/2 API REG	3.75	95	18	8000	89009494	314-2115-14-16, 41
4.50	114	6.29	160	3 1/2 API REG	API NC 35	3.75	95	22	10000	89009052	314-2115-19-16, 41
4.50	114	9.00	229	3 1/2 API REG	3 1/2 API REG	3.50	89	22	10000	57155947	314-2114-14-23, 41
4.50	114	38.00	965	3 1/2 API REG	3 1/2 API REG	3.50	89	141	64000	57762940	314-2114-14-97, 41
5.00	127	9.00	229	3 1/2 API REG	3 1/2 API REG	3.50	89	44	20000	57187114	314-2127-14-23, 41
5.00	127	24.00	607	3 1/2 API REG	3 1/2 API REG	3.50	89	134	61000	57194078	314-2127-14-61, 41
5.00	127	36.00	914	3 1/2 API REG	3 1/2 API REG	3.50	89	159	72000	57194086	314-2127-14-91, 41
5.00	127	9.00	229	3 1/2 API REG	3 1/2 BECO	3.50	89	44	20000	57236895	314-2127-B1-23, 41
5.00	127	19.00	483	3 1/2 API REG	4 FH	3.50	89	57	26000	50217504	314-2127-21-48, 41
5.00	127	16.50	419	3 1/2 API REG	4 FH	3.50	89	55	25000	52156734	314-2127-21-42, 41
5.50	140	32.00	813	3 1/2 API REG	3 1/2 BECO	4.50	114	189	86000	52249463	314-2140-B1-81, 41
5.75	146	5.16	131	3 1/2 API REG	4 1/2 API REG	4.71	120	36	16500	89009099	314-2146-17-13, 42
6.00	152	19.00	483	3 1/2 API REG	4 IF	3.50	89	112	51000	57032872	314-2152-19-48, 41
5.50	140	19.00	483	3 1/2 BECO	4 FH	4.50	114	73	33000	52206992	3B1-2140-21-48, 41
6.00	152	19.00	483	3 1/2 BECO	4 IF	3.50	89	108	49000	57294845	3B1-2152-19-48, 41
6.00	152	19.00	483	4 BECO	4 IF	4.50	114	121	55000	57032955	3B2-2152-19-48, 41
5.50	140	24.00	607	4 FH	2 7/8 IF	3.50	89	81	37000	52215456	321-2140-13-61, 41
4.50	114	24.00	607	4 1/2 API REG	3 1/2 API REG	3.50	89	79	36000	50346881	317-2114-14-61, 41
5.50	140	9.00	229	4 1/2 API REG	3 1/2 API REG	4.50	114	46	21000	57142069	317-2140-14-23, 41
5.50	140	36.00	914	4 1/2 API REG	3 1/2 BECO	4.50	114	216	98000	57678625	317-2140-B1-91, 41
5.50	140	9.00	229	4 1/2 API REG	3 1/2 BECO	4.50	114	46	21000	52206984	317-2140-B1-23, 41
5.50	140	24.00	607	4 1/2 API REG	3 1/2 BECO	4.50	114	139	63000	57338477	317-2140-B1-61, 41
5.75	146	9.25	235	4 1/2 API REG	3 1/2 API REG	3.75	95	42	19000	89009588	317-2146-14-23, 42
6.25	159	32.00	813	4 1/2 API REG	4 BECO	4.50	114	247	112000	52267606	317-2159-B2-81, 41
6.25	159	8.50	216	4 1/2 API REG	4 BECO	4.50	114	57	26000	57015935	317-2159-B2-22, 41
6.25	159	24.00	607	4 1/2 API REG	4 BECO	4.50	114	181	82000	57360802	317-2159-B2-61, 41
6.25	159	48.00	1219	4 1/2 API REG	4 BECO	4.50	114	374	170000	57444499	317-2159-B2-122, 41
7.00	178	25.00	635	4 1/2 API REG	4 1/2 BECO	4.50	114	238	108000	57384802	317-2178-B3-64, 41
7.00	178	9.00	229	4 1/2 API REG	4 1/2 BECO	5.00	127	75	34000	52182045	317-2178-B3-23, 41
7.00	178	15.00	381	4 1/2 API REG	4 1/2 BECO	5.75	146	143	65000	57134231	317-2178-B3-38, 41
7.62	194	15.00	381	4 1/2 API REG	5 1/4 BECO	6.75	171	172	78000	57500811	317-2194-B5-38, 41
7.62	194	15.00	381	5 1/2 API REG	4 1/2 BECO	6.75	171	165	75000	57502635	318-2194-B3-38, 41

Down the hole drilling

Subs

Diameter		Length		Configuration		Flats		Weight		Product No.	Catalogue No.
inch	mm	inch	mm	Box	Pin	inch	mm	lbs	gm		
7.62	194	15.00	381	5 1/2 API REG	5 1/4 BECO	6.75	171	163	74000	57108615	318-2194-B5-38, 41
7.62	194	25.00	635	5 1/2 API REG	5 1/4 BECO	6.75	171	365	165900	57384794	318-2194-B5-64, 41
8.62	219	25.00	635	5 1/2 API REG	6 BECO	7.75	197	366	166000	57384778	318-2219-B6-64, 41
7.62	194	19.00	483	5 1/4 BECO	6 5/8 API REG	6.75	171	211	96000	52243375	3B5-2194-31-48, 41
7.62	194	21.00	533	5 1/4 BECO	6 5/8 API REG	6.75	171	233	106000	57449340	3B5-2194-31-53, 41
7.00	178	15.00	381	6 5/8 API REG	4 1/2 BECO	5.75	146	128	58000	57312894	331-2178-B3-38, 41
7.62	194	27.00	686	6 5/8 API REG	5 1/4 BECO	6.75	171	284	129000	57051310	331-2194-B5-69, 41
7.62	194	15.00	381	6 5/8 API REG	5 1/4 BECO	6.75	171	152	69000	57109563	331-2194-B5-38, 41
7.62	194	25.00	635	6 5/8 API REG	5 1/4 BECO	6.75	171	360	163600	57384786	331-2194-B5-64, 41
7.62	194	12.00	305	6 5/8 API REG	5 1/4 BECO	6.00	152	137	62000	57339491	331-2194-B5-30, 41
8.62	219	15.00	381	6 5/8 API REG	6 BECO	7.75	197	205	93000	57110520	331-2219-B6-38, 41
8.62	219	25.00	635	6 5/8 API REG	6 BECO	7.75	197	361	164000	57384760	331-2219-B6-64, 41
8.62	219	47.50	1207	6 5/8 API REG	6 BECO	7.75	197	694	315000	57591810	331-2219-B6-121, 41
9.25	235	47.50	1207	6 5/8 API REG	6 BECO	7.75	197	802	364000	57591828	331-2235-B6-121, 41
10.75	273	15.00	381	6 5/8 API REG	8 BECO	9.25	235	374	170000	57201188	331-2273-B8-38, 41
10.75	273	25.00	635	6 5/8 API REG	8 BECO	9.25	235	608	276000	57384745	331-2273-B8-64, 41
8.88	226	24.00	607	7 5/8 API REG	6 5/8 API REG	4.50	114	293	133000	52249281	332-2226-31-61, 41
For Roc Tubes (no flats)											
3.00	77	12.00	305	2 3/8 API REG	2 3/8 API REG	n/a	n/a	19.6	8900	89000701	310-2076-10-30-44, 41
3.50	90	12.00	305	2 3/8 API REG	2 3/8 API REG	n/a	n/a	28.6	13000	89000644	310-2090-10-30-44, 41
4.00	102	12.00	305	2 7/8 API REG	2 3/8 API REG	n/a	n/a	35.2	16000	89000655	312-2102-10-30-44, 41
4.50	115	12.00	305	3 1/2 API REG	3 1/2 API REG	n/a	n/a	46.2	21000	89000702	314-2115-14-30-44, 41
4.50	115	12.00	305	3 1/2 API REG	2 7/8 API REG	n/a	n/a	46.2	21000	89000854	314-2115-12-30-44, 41

Pin to Pin (male to male)



Diameter		Length		Configuration			Flats		Weight		Product No.	Catalogue No.
inch	mm	inch	mm		Pin	Pin	inch	mm	lbs	g		
3.00	77	2.33	60	Pin/Pin	RD 50-6	2 3/8 API REG	2.63	65	6.6	3000	89009270	340-3077-10-06, 41
3.50	90	2.75	70	Pin/Pin	RD 70-4	2 3/8 API REG	2.63	65	10	4600	89009272	342-3090-10-07, 41
3.50	90	2.75	70	Pin/Pin	2 3/8 API REG	2 3/8 API REG	2.63	65	10	4600	89009498	310-3090-10-07, 41
3.69	94	4.00	102	Pin/Pin	2 3/8 API REG	2 3/8 API REG	2.25	57	11	5000	50984616	310-3094-10-10, 41
4.75	121	19.50	495	Pin/Pin	2 3/8 IF	3 1/2 IF	No	No	62	28000	58040361	315-3121-11-50, 41
4.75	121	19.50	495	Pin/Pin	2 7/8 IF	3 1/2 IF	No	No	81	37000	58036625	315-3121-13-50, 41
5.00	127	38.00	970	Pin/Pin	4 FH	3 1/2 IF	3.50	89	200	91000	57611360	315-3127-21-97, 41

Index Sorted by Product Number

Product No	Catalog No	Page
50217504	314-2127-21-48, 41	11
50262187	214-8776-45, 55-16	5
50346881	317-2114-14-61, 41	11
50348358	214-8876-46, 55-08	6
50348358	214-8876-45, 55-08	6
50350156	212-8676-45, 40-08	5
50364488	210-8430-65, 40-06	7
50425859	214-8776-59, 40-08	8
50426238	214-8766-60, 55-16	8
50426493	221-8976-59, 55-12	8
50452697	214-8876-45, 55-12	6
50984616	310-3094-10-10, 41	13
51031318	314-2114-Z1-25, 41	11
51788479	221-8440-65, 40-06	7
51788487	222-8640-65, 40-06	7
51788644	314-2102-Z3-34, 41	11
51788651	222-8624-66, 40-06	7
51862472	221-8426-66, 40-06	7
51862506	310-2076-Z1-30, 41	10
51985885	221-8429-66-10, 40-08	7
51985893	222-8627-66-14, 40-08	7
51988939	221-8440-65, 55-08	7
52137031	210-8527-66-Z2, 40-08	7
52156734	314-2127-21-42, 41	11
52182045	317-2178-B3-23, 41	11
52185261	214-8876-45, 55-19	6
52202033	213-8776-45, 40-08	5
52202470	213-8764-46, 55-16	5
52206976	2B1-8976-45, 55-12	6
52206984	317-2140-B1-23, 41	11
52206992	3B1-2140-21-48, 41	11
52215456	321-2140-13-61, 41	11
52215464	313-2127-21-48, 41	10
52243375	3B5-2194-31-48, 41	12
52249281	332-2226-31-61, 41	12
52249463	314-2140-B1-81, 41	11
52256369	213-8791-45, 40-08	5
52259009	2B2-9376-45, 55-12	6
52267606	317-2159-B2-81, 41	11
52296696	214-8640-65-Z2, 40-12	7
52432401	2B3-9461-59, 55-12	8
56930563	314-1121-14-30, 41	10
56934789	314-1114-12-25, 41	10
56938665	310-2089-15-36, 41	10
56952567	212-8664-46, 55-19	5
56970775	210-8576-47, 40-08	5
56970791	212-8676-47, 40-08	5
56970809	212-8664-46, 40-08	5
56978992	2B5-9407-59, 55-19	7
56995863	212-8664-46, 40-08	5
56996317	312-2102-15-36, 41	10
56996663	314-2102-12-30, 41	11
57003162	2B8-9621-59, 55-25	7
57006769	212-8676-47, 40-08	5
57006868	2B5-9476-45, 55-22	6
57015935	317-2159-B2-22, 41	11
57032872	314-2152-19-48, 41	11
57032955	3B2-2152-19-48, 41	11
57041592	210-8564-46, 55-19	5
57048514	313-2127-21-107, 41	10
57051310	331-2194-B5-69, 41	12
57078784	2B5-9491-47, 55-19	6
57085425	312-2146-19-48, 41	10
57093163	312-2152-19-48, 41	10
57108615	318-2194-B5-38, 41	12
57109563	331-2194-B5-38, 41	12

Product No	Catalog No	Page
57110454	2B5-92A7-59, 55-16	7
57110520	331-2219-B6-38, 41	12
57110777	2B5-92A0-60, 55-16	7
57111338	2B5-9297-60, 55-16	7
57134165	2B3-92A7-59, 55-16	7
57134231	317-2178-B3-38, 41	11
57136228	214-8791-45, 40-08	5
57139164	2B2-9363-46, 55-12	6
57142069	317-2140-14-23, 41	11
57155780	214-8791-45, 55-19	5
57155798	214-8891-45, 55-12	6
57155806	212-8691-45, 40-08	5
57155814	214-8891-45, 55-08	6
57155822	212-8681-46, 55-19	5
57155830	214-8881-46, 55-19	6
57155913	314-2102-12-23, 41	11
57155921	312-2102-12-23, 41	10
57155947	314-2114-14-23, 41	11
57156317	212-8691-45, 55-19	5
57156663	214-8781-46, 55-19	6
57178766	2B1-8978-46, 55-12	6
57178774	2B2-9378-46, 55-12	6
57178782	2B3-9278-46, 55-12	6
57178824	214-8791-45, 55-12	5
57178865	2B1-8991-45, 55-12	6
57178873	2B2-9391-45, 55-12	6
57178881	2B3-9291-45, 55-12	6
57187114	314-2127-14-23, 41	11
57194078	314-2127-14-61, 41	11
57194086	314-2127-14-91, 41	11
57198277	2B3-9276-45, 55-19	6
57200404	2B3-92A7-59, 55-25	7
57201188	331-2273-B8-38, 41	12
57204976	2B5-94A7-59, 55-25	7
57209058	2B3-9292-60, 55-25	7
57218661	2B5-94A0-60, 55-25	7
57225518	2B5-9491-45, 55-19	6
57233249	313-2127-21-137, 41	10
57236184	2B1-8963-46, 55-12	6
57236895	314-2127-B1-23, 41	11
57236903	2B1-8891-45, 55-19	6
57290322	2B1-8991-45, 55-19	6
57294845	3B1-2152-19-48, 41	11
57294894	2B3-9291-45, 55-19	6
57312050	2B3-92A7-59, 55-19	7
57312068	2B3-9288-60, 55-19	7
57312894	331-2178-B3-38, 41	12
57315509	2B8-96C2-59, 55-25	7
57323917	210-8591-47, 55-12	5
57323925	210-8581-46, 55-12	5
57336877	2B5-9476-45, 55-19	6
57338477	317-2140-B1-61, 41	11
57339491	331-2194-B5-30, 41	12
57347163	2B6-97C2-59, 55-25	7
57347478	2B5-94C2-59, 55-25	7
57351306	2B3-92C2-59, 55-25	7
57354557	214-8891-45, 55-19	6
57360802	317-2159-B2-61, 41	11
57376477	2B2-9391-45, 55-19	6
57382657	2B5-9491-45, 55-25	6
57384745	331-2273-B8-64, 41	12
57384760	331-2219-B6-64, 41	12
57384778	318-2219-B6-64, 41	12
57384786	331-2194-B5-64, 41	12
57384794	318-2194-B5-64, 41	12
57384802	317-2178-B3-64, 41	11
57415945	2B2-93A7-45, 55-12	6

Product No	Catalog No	Page
57415952	2B2-93A7-45, 55-19	6
57423204	2B6-97F2-59, 55-22	7
57435455	214-87A7-45, 55-12	5
57439572	2B1-8891-45, 55-12	6
57439721	2B1-8881-46, 55-12	6
57444499	317-2159-B2-122, 41	11
57449340	3B5-2194-31-53, 41	12
57450447	214-8890-46, 55-19	6
57450454	214-88A7-45, 55-12	6
57468845	2B6-97A0-60, 55-25	7
57469033	2B1-88A7-45, 55-12	6
57473498	2B1-8976-45, 55-19	6
57495434	2B3-92A7-45, 55-19	6
57500811	317-2194-B5-38, 41	11
57502635	318-2194-B3-38, 41	11
57518706	214-8896-46, 55-19	6
57518714	214-88A7-45, 55-19	6
57523557	2B1-89A7-45, 55-19	6
57526493	2B5-9407-59, 55-25	7
57583239	2B6-97A7-59, 55-51	8
57583437	2B8-96A7-59, 55-25	8
57583445	2B8-99A7-59, 55-25	8
57583452	2B8-A0A7-59, 55-25	8
57583569	2B5-94A7-59, 55-51	8
57591810	331-2219-B6-121, 41	12
57591828	331-2235-B6-121, 41	12
57611360	315-3127-21-97, 41	13
57620544	313-2140-21-24, 41	10
57663015	2B1-8876-45, 55-12	6
57663023	2B1-8866-46, 55-12	6
57678625	317-2140-B1-91, 41	11
57690430	215-8761-47, 40-08	6
57690448	213-8761-47, 40-08	5
57699035	214-8527-66-Z2, 40-08	7
57699050	222-8540-65, 40-06	7
57708372	2B3-9276-45, 55-12	6
57708398	2B3-9291-45, 55-12	6
57708406	2B3-92A7-45, 55-12	6
57716755	2B3-9291-45, 55-19	6
57716763	2B3-9276-45, 55-25	6
57730756	317-1140-17-30, 41	10
57756348	2B5-9476-60, 55-19	8
57756355	2B5-9424-59, 55-19	8
57762940	314-2114-14-97, 41	11
57769358	2B3-9491-59, 55-12	8
57769366	2B3-9476-59, 55-12	8
58036625	315-3121-13-50, 41	13
58040361	315-3121-11-50, 41	13
58135732	311-1089-10-51, 41	10
58135856	313-1140-17-61, 41	10
58160896	211-8561-48, 40-08	8
58160912	214-8761-48, 40-08	8
58160953	213-8761-48, 40-08	8
58248956	2B5-94A7-59, 55-19	7
89009306	210-8518-41, 40-04	8
89009307	214-8719-41, 40-06	8
89009398	210-8440-44, 40-06	8
89000444	210-8450-44, 40-06	8
89000445	210-8540-44, 40-06	8
89000442	210-8550-44, 40-06	8
89009556	210-8560-44, 40-06	9
89000999	210-8560-44, 40-08	9
89000648	212-8640-44, 40-06	9
89000681	212-8650-44, 40-06	9
89000698	212-8660-44, 40-06	9
89009355	214-8760-44, 40-06	9
89000982	217-8960-44, 40-08	9

Product No	Catalog No	Page
89009467	240-8330, 40-04	9
89009174	240-8415, 40-04	9
89009175	240-8420, 40-04	9
89009176	240-8430, 40-04	9
89009469	210-8410, 40-04	9
89009468	210-8415, 40-04	9
89009489	210-8420, 40-04	9
89006470	210-8430, 40-04	9
89009345	210-8410, 40-06	9
89009346	210-8415, 40-06	9
89009347	210-8420, 40-06	9
89009348	210-8430, 40-06	9
89009194	210-8510, 40-04	9
89009471	210-8515, 40-04	9
89009490	210-8520, 40-04	9
89009472	210-8530, 40-04	9
89009209	210-8510, 40-06	9
89009479	210-8515, 40-06	9
89009270	210-8520, 40-06	9
89009473	210-8530, 40-06	9
89009220	212-8530, 40-06	9
89009423	212-8630, 40-06	9
89009446	214-8730, 40-04	9
89009229	214-8710, 40-06	9
89009475	214-8715, 40-06	9
89009230	214-8720, 40-06	9
89009476	214-8730, 40-06	9
89009480	214-8745, 40-06	9
89009477	214-8760, 40-06	9
89009365	214-8710, 40-08	9
89009367	214-8720, 40-08	9
89009368	214-8730, 40-08	9
89009370	214-8760, 40-08	9
89009213	211-8520, 40-06	9
89009354	211-8530, 40-04	9
89009228	213-8760, 40-06	9
89009257	340-1077-10-14, 41	10
89009261	310-1077-10-20, 41	10
89009482	310-1090-10-20, 41	10
89009259	342-1115-14-18, 41	10
89009483	310-1115-14-21, 41	10
89009286	310-2077-40-14, 41	10
89009288	310-2077-10-14, 41	10
89009496	310-2090-10-14, 41	10
89009492	310-2095-12-13, 41	10
89009087	310-2102-10-13, 41	10
89009491	310-2115-14-12, 41	10
89009011	312-2090-10-15, 41	10
89009495	314-2115-10-22, 41	11
89000860	314-2115-10-30, 41	11
89009051	314-2115-12-16, 41	11
89009053	314-2115-13-16, 41	11
89009494	314-2115-14-16, 41	11
89009052	314-2115-19-16, 41	11
89009099	314-2146-17-13, 42	11
89009588	317-2146-14-23, 42	11
89000701</		

Index Sorted by Catalog Number

Product No	Catalog No	Page	Product No	Catalog No	Page	Product No	Catalog No	Page	Product No	Catalog No	Page
89009469	210-8410, 40-04	8	89009355	214-8760-44, 40-06	8	57769358	2B3-9491-59, 55-12	8	56996663	314-2102-12-30, 41	11
89009345	210-8410, 40-06	8	58160912	214-8761-48, 40-08	8	57111338	2B5-9297-60, 55-16	7	51788644	314-2102-Z3-34, 41	11
89009468	210-8415, 40-04	8	50426238	214-8766-60, 55-16	8	57110777	2B5-92A0-60, 55-16	7	57155947	314-2114-14-23, 41	11
89009346	210-8415, 40-06	8	50425859	214-8776-59, 40-08	8	57110454	2B5-92A7-59, 55-16	7	57762940	314-2114-14-97, 41	11
89009489	210-8420, 40-04	8	50262187	214-8776-45, 55-16	5	57756355	2B5-9424-59, 55-19	8	51031318	314-2114-Z1-25, 41	11
89009347	210-8420, 40-06	8	57156663	214-8781-46, 55-19	6	57336877	2B5-9476-45, 55-19	6	89009495	314-2115-10-22, 41	11
51985885	221-8429-66-10, 40-08	7	57136228	214-8791-45, 40-08	5	57006868	2B5-9476-45, 55-22	6	89000860	314-2115-10-30, 41	11
89009470	210-8430, 40-04	8	57178824	214-8791-45, 55-12	5	57756348	2B5-9476-60, 55-19	8	89009051	314-2115-12-16, 41	11
89009348	210-8430, 40-06	8	57155780	214-8791-45, 55-19	5	57225518	2B5-9491-45, 55-19	6	89000854	314-2115-12-30-44, 41	12
50364488	210-8430-65, 40-06	7	57435455	214-87A7-45, 55-12	5	57382657	2B5-9491-45, 55-25	6	89009053	314-2115-13-16, 41	11
89009398	210-8440-44, 40-06	8	50348333	214-8866-46, 55-08	6	57078784	2B5-9491-47, 55-19	6	89009494	314-2115-14-16, 41	11
89000444	210-8450-44, 40-06	8	50348358	214-8876-45, 55-08	6	57218661	2B5-94A0-60, 55-25	7	89009052	314-2115-19-16, 41	11
89009194	210-8510, 40-04	8	50452697	214-8876-45, 55-12	6	58248956	2B5-94A7-59, 55-19	7	57187114	314-2127-14-23, 41	11
89009209	210-8510, 40-06	8	52185261	214-8876-45, 55-19	6	57204976	2B5-94A7-59, 55-25	7	57194078	314-2127-14-61, 41	11
89009471	210-8515, 40-04	8	57155830	214-8881-46, 55-19	6	57583569	2B5-94A7-59, 55-51	8	57194086	314-2127-14-91, 41	11
89009479	210-8515, 40-06	8	57450447	214-8890-46, 55-19	6	57347478	2B5-94C2-59, 55-25	7	52156734	314-2127-21-42, 41	11
89009306	210-8518-41, 40-04	8	57155814	214-8891-45, 55-08	6	56978992	2B5-94D7-59, 55-19	7	50217504	314-2127-21-48, 41	11
89009490	210-8520, 40-04	8	57155798	214-8891-45, 55-12	6	57526493	2B5-94D7-59, 55-25	7	57236895	314-2127-B1-23, 41	11
89009270	210-8520, 40-06	8	57364557	214-8891-45, 55-19	6	57468845	2B6-97A0-60, 55-25	7	52249463	314-2140-B1-81, 41	11
52137031	210-8527-66-22, 40-08	7	57518706	214-8896-46, 55-19	6	57583239	2B6-97A7-59, 55-51	8	89009099	314-2146-17-13, 42	11
89009472	210-8530, 40-04	8	57450454	214-88A7-45, 55-12	6	57347163	2B6-97C2-59, 55-25	7	57032872	314-2152-19-48, 41	11
89009473	210-8530, 40-06	8	57518714	214-88A7-45, 55-19	6	57423204	2B6-97F2-59, 55-22	7	57611360	315-3127-21-97, 41	13
89000445	210-8540-44, 40-06	8	57690430	215-8761-47, 40-08	6	57003162	2B8-9621-59, 55-25	7	58040361	315-3121-11-50, 41	13
89000442	210-8550-44, 40-06	8	89000982	217-8960-44, 40-08	8	57583437	2B8-96A7-59, 55-25	8	58036625	315-3121-13-50, 41	13
89009556	210-8560-44, 40-06	8	50426493	221-8976-59, 55-12	8	57315509	2B8-96C2-59, 55-25	7	57730756	317-1140-17-30, 41	10
89009999	210-8560-44, 40-08	8	89009467	240-8330, 40-04	8	57583445	2B8-99A7-59, 55-25	8	50346881	317-2114-14-61, 41	11
57041592	210-8564-46, 55-19	5	89009174	240-8415, 40-04	8	57583452	2BA-A0A7-59, 55-25	8	57142069	317-2140-14-23, 41	11
56970775	210-8576-47, 40-08	5	89009175	240-8420, 40-04	8	51862472	221-8429-66, 40-06	7	52206984	317-2140-B1-23, 41	11
57323925	210-8581-46, 55-12	5	89009176	240-8430, 40-04	8	51788479	221-8440-65, 40-06	7	57338477	317-2140-B1-61, 41	11
57323917	210-8591-47, 55-12	5	57663023	2B1-8866-46, 55-12	6	51988939	221-8440-65, 55-08	7	57678625	317-2140-B1-91, 41	11
89009213	211-8520, 40-06	8	57663015	2B1-8876-45, 55-12	6	57699050	222-8540-65, 40-06	7	89009588	317-2146-14-23, 42	11
89009354	211-8530, 40-04	8	57439721	2B1-8881-46, 55-12	6	51788651	222-8624-66, 40-06	7	57444499	317-2159-B2-122, 41	11
58160896	211-8561-48, 40-08	8	57439572	2B1-8891-45, 55-12	6	51985893	222-8627-66-14, 40-08	7	57105935	317-2159-B2-22, 41	11
89009220	212-8530, 40-06	8	57236903	2B1-8891-45, 55-19	6	51788487	222-8640-65, 40-06	7	57360802	317-2159-B2-61, 41	11
89009423	212-8630, 40-06	8	57469033	2B1-88A7-45, 55-12	6	89009261	310-1077-10-20, 41	10	52267606	317-2159-B2-81, 41	11
89000648	212-8640-44, 40-06	8	57236184	2B1-8963-46, 55-12	6	89009482	310-1090-10-20, 41	10	52182045	317-2178-B3-23, 41	11
89000681	212-8650-44, 40-06	8	52206976	2B1-8976-45, 55-12	6	89009483	310-1115-14-21, 41	10	57134231	317-2178-B3-38, 41	11
89000698	212-8660-44, 40-06	8	57473498	2B1-8976-45, 55-19	6	89000701	310-2076-10-30-44, 41	12	57384802	317-2178-B3-64, 41	11
56970809	212-8664-46, 40-08	5	57178766	2B1-8978-46, 55-12	6	51862506	310-2076-Z1-30, 41	10	57500811	317-2194-B5-38, 41	11
56995863	212-8664-46, 40-08	5	57178865	2B1-8991-45, 55-12	6	89009288	310-2077-10-14, 41	10	57502635	318-2194-B3-38, 41	11
56952567	212-8664-46, 55-19	5	57290322	2B1-8991-45, 55-19	6	89009286	310-2077-40-14, 41	10	57108615	318-2194-B5-38, 41	12
50350156	212-8676-45, 40-08	5	57523557	2B1-89A7-45, 55-19	6	56938665	310-2089-15-36, 41	10	57384794	318-2194-B5-64, 41	12
56970791	212-8676-47, 40-08	5	57139164	2B2-9363-46, 55-12	6	89000644	310-2090-10-30-44, 41	12	57384778	318-2219-B6-64, 41	12
57006769	212-8676-47, 40-08	5	52259009	2B2-9376-45, 55-12	6	89009496	310-2090-10-14, 41	10	52215456	321-2140-13-61, 41	11
57155822	212-8681-46, 55-19	5	57178774	2B2-9378-46, 55-12	6	89009492	310-2095-12-13, 41	10	57312894	331-2178-B3-38, 41	12
57155806	212-8691-45, 40-08	5	57178873	2B2-9391-45, 55-12	6	89009087	310-2102-10-13, 41	10	57339491	331-2194-B5-30, 41	12
57156317	212-8691-45, 55-19	5	57376477	2B2-9391-45, 55-19	6	89009088	310-2102-12-14, 41	12	57109563	331-2194-B5-38, 41	12
89009228	213-8760, 40-06	8	57415945	2B2-93A7-45, 55-12	6	89009491	310-2115-14-12, 41	10	57384786	331-2194-B5-64, 41	12
58160953	213-8761-48, 40-08	8	57415952	2B2-93A7-45, 55-19	6	89009498	310-3090-10-07, 41	13	57051310	331-2194-B5-69, 41	12
57690448	213-8761-47, 40-08	5	57708372	2B3-9276-45, 55-12	6	50984616	310-3094-10-10, 41	13	57591810	331-2219-B6-121, 41	12
52202470	213-8764-46, 55-16	5	57198277	2B3-9276-45, 55-19	6	58135732	311-1089-10-51, 41	10	57110520	331-2219-B6-38, 41	12
52202033	213-8776-45, 40-08	5	57716763	2B3-9276-45, 55-25	6	89009011	312-2090-10-15, 41	10	57384760	331-2219-B6-64, 41	12
52256369	213-8791-45, 40-08	5	57178782	2B3-9278-46, 55-12	6	89000655	312-2102-10-30-44, 41	12	57591828	331-2235-B6-121, 41	12
57699035	214-8527-66-22, 40-08	7	57312068	2B3-9288-60, 55-19	7	57155921	312-2102-12-23, 41	10	57201188	331-2273-B8-38, 41	12
52296696	214-8640-65-Z2, 40-12	7	57178881	2B3-9291-45, 55-12	6	56996317	312-2102-15-36, 41	10	57384745	331-2273-B8-64, 41	12
89009229	214-8710, 40-06	8	57708398	2B3-9291-45, 55-12	6	89000702	314-2115-14-30-44, 41	12	52249281	332-2226-31-61, 41	12
89009365	214-8710, 40-08	8	57294894	2B3-9291-45, 55-19	6	57085425	312-2146-19-48, 41	10	89009257	340-1077-10-14, 41	10
89009475	214-8715, 40-06	8	57716755	2B3-9291-45, 55-19	6	57093163	312-2152-19-48, 41	10	89009270	340-3077-10-06, 41	13
89009307	214-8719-41, 40-06	8	57209058	2B3-9292-60, 55-25	7	58135856	313-1140-17-61, 41	10	89009259	342-1115-14-18, 41	10
89009230	214-8720, 40-06	8	57708406	2B3-92A7-45, 55-12	6	57048514	313-2127-21-107, 41	10	89009272	342-3090-10-07, 41	13
89009367	214-8720, 40-08	8	57495434	2B3-92A7-45, 55-19	6	57233249	313-2127-21-137, 41	10	52206992	381-2140-21-48, 41	11
89009446	214-8730, 40-04	8	57134165	2B3-92A7-59, 55-16	7	52215464	313-2127-21-48, 41	10	57294845	381-2152-19-48, 41	11
89009476	214-8730, 40-06	8	57312050	2B3-92A7-59, 55-19	7	57620544	313-2140-21-24, 41	10	57032955	382-2152-19-48, 41	11
89009368	214-8730, 40-08	8	57200404	2B3-92A7-59, 55-25	7	56934789	314-1114-12-25, 41	10	52243375	385-2194-31-48, 41	12
89009480	214-8745, 40-06	8	57351306	2B3-92C2-59, 55-25	7	56930563	314-1121-14-30, 41	10	57449340	385-2194-31-53, 41	12
89009477	214-8760, 40-06	8	52342011	2B3-9461-45, 55-12	8	57155913	314-2102-12-23, 41	11			
89009370	214-8760, 40-08	8	57769366	2B3-9476-59, 55-12	8						



Atlas Copco Secoroc AB
Box 521, SE-737 25 Fagersta, Sweden
Tel +46 223 461 00 – Fax +46 223 461 01
www.atlascopco.com